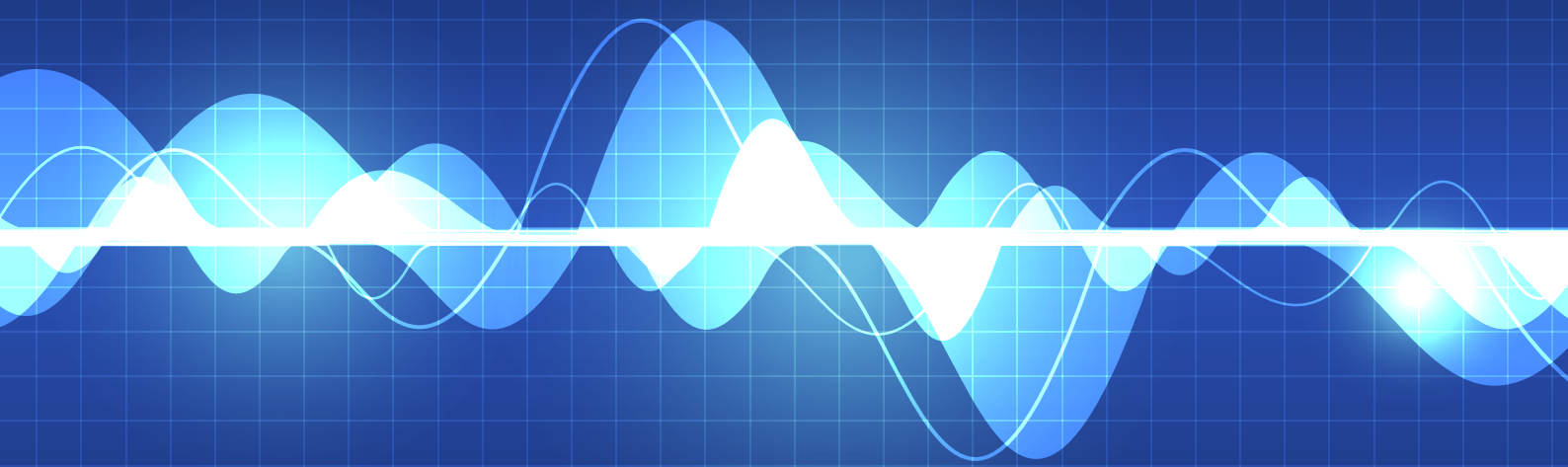


Tahmoor South Project - Second Amended Project

Noise and Vibration Impact Assessment

Prepared for Simec Mining
July 2020





Servicing projects throughout Australia and internationally

SYDNEY

Ground Floor, 20 Chandos Street
St Leonards NSW 2065
T 02 9493 9500

NEWCASTLE

Level 3, 175 Scott Street
Newcastle NSW 2300
T 02 4907 4800

BRISBANE

Level 1, 87 Wickham Terrace
Spring Hill QLD 4000
T 07 3648 1200

ADELAIDE

Level 1, 70 Pirie Street
Adelaide SA 5000
T 08 8232 2253

MELBOURNE

Ground Floor, 188 Normanby Road
Southbank VIC 3006
T 03 9993 1905

PERTH

Suite 9.02, Level 9, 109 St Georges Terrace
Perth WA 6000
T 02 9339 3184

CANBERRA

Level 8, 121 Marcus Street
Canberra ACT 2600

Tahmoor South Project - Second Amended Project

Noise and Vibration Impact Assessment

Report Number

H180165 RP4

Client

Simec Mining

Date

27 July 2020

Version

v2 Final

Prepared by



Katie Teyhan

Associate

27 July 2020

Approved by



Najah Ishac

Director

27 July 2020

This report has been prepared in accordance with the brief provided by the client and has relied upon the information collected at the time and under the conditions specified in the report. All findings, conclusions or recommendations contained in the report are based on the aforementioned circumstances. The report is for the use of the client and no responsibility will be taken for its use by other parties. The client may, at its discretion, use the report to inform regulators and the public.

© Reproduction of this report for educational or other non-commercial purposes is authorised without prior written permission from EMM provided the source is fully acknowledged. Reproduction of this report for resale or other commercial purposes is prohibited without EMM's prior written permission.

Table of Contents

1	Introduction	1
1.1	Background	1
1.2	Amendments to Project	1
2	Amendments to Project	3
3	Noise and vibration assessment	4
3.1	Introduction	4
3.2	Noise modelling	4
3.3	Achievable noise levels	6
4	Conclusion	9
	References	10

Appendices

Appendix A Noise modelling – source locations

Appendix B Noise modelling results

Appendix C Noise impact categories

Tables

Table 3.1	Noise assessment summary	5
Table 3.2	Predicted ‘achievable’ noise levels (noise enhancing)	7

Figures

Figure 3.1	Achievable noise level locations	8
------------	----------------------------------	---

1 Introduction

1.1 Background

Tahmoor Coal Pty Ltd (Tahmoor Coal) owns and operates the Tahmoor Mine, an existing underground coal mine approximately 80 kilometres (km) south-west of Sydney in the Southern Coalfields of New South Wales (NSW). The mine has been operating since 1979 when product coal was first produced.

Currently, up to three million tonnes (Mt) of run-of-mine (ROM) coal is extracted annually from the mine. Product coal is primarily transported via rail to Port Kembla Coal Terminal, or to Newcastle Port Waratah from time to time, for shipment to both Australian and international markets.

Tahmoor Mine employs close to 400 people.

Mining within the existing Tahmoor North mining area is scheduled for completion by approximately 2022, depending on geological and mining conditions. Without access to a new extraction area by this time, Tahmoor Mine would commence closure of the mine resulting in cessation of the extraction of the coking coal resource. Accordingly, Tahmoor Coal is seeking approval for the Tahmoor South Project, being an extension of underground coal mining at Tahmoor Mine, to the south of Tahmoor Coal's existing mining area (the Project).

Given its significance to the State, the Project is deemed to be State significant development (SSD) under the provisions of the NSW Environmental Planning and Assessment Act 1979 (EP&A Act). Under these provisions, the NSW Minister for Planning and Public Spaces, or delegate, is the consent authority for the Project. Approval for the Project is also required from the Commonwealth Minister for the Environment under the provisions of the Commonwealth Environment Protection and Biodiversity Conservation Act 1999 (EPBC Act).

Following the receipt of updated Secretary's Environmental Assessment Requirements (SEARs) in June 2018, an environmental impact statement (EIS) was prepared by AECOM Australia Pty Limited (AECOM 2018) for the Project. The EIS was publicly exhibited between 23 January and 5 March 2019 by the NSW Department of Planning, Industry and Environment (DPIE). In response, 91 submissions were received from the community and community organisations, and 15 responses were received from government agencies and councils.

On 20 February 2020, a submissions report (AECOM 2020a) was lodged with DPIE which responded to all submissions made during exhibition of the EIS. At the same time (ie 20 February 2020) a project amendment report (AECOM 2020b) was lodged with DPIE to document amendments made to the Project in response to the submissions and to reduce potential environmental impacts of the Project.

The amendments documented in the project amendment report included, among other things, changes to the mine plan and the reject emplacement area (REA). The changes to the mine plan included the removal of a longwall in the northern part of the mine (LW109), reconfiguration of the longwall layouts to comprise two series of shorter longwall panels, the reduction of the width of the longwalls, and a reduction in the height of extraction within the longwalls. The changes to the REA included a reduction in the proposed extension area by increasing the height of the REA.

1.2 Amendments to Project

Tahmoor Coal has now made the decision to make further changes to the Project to further reduce potential environmental impacts, particularly potential subsidence and biodiversity impacts. These amendments include the removal of two longwalls, LW107B and LW108B, further changes to the REA design and small amendments to the layout of the ventilation shafts and associated transmission line easements.

With the removal of LW107B and LW108B the life of mining will be reduced from about 2035 as described in the project amendment report (AECOM 2020b) to about 2032 (ie reduction of about three years).

All other aspects of the Project remain the same as those documented in the project amendment report (AECOM 2020b).

Further details on the proposed amendments to the Project are described in Section 2.

2 Amendments to Project

As previously stated, changes are proposed to the Project to further reduce potential environmental impacts, particularly potential subsidence and biodiversity impacts. These amendments include:

- the removal of two longwalls in the southern part of the mine (LW107B and LW108B);
- the containment of the REA within the bounds of the currently approved disturbance footprint; and
- changes to the layout of the ventilation shafts and associated transmission line easements.

The removal of LW107B and LW108B will reduce the estimated production volume of the Project from about:

- 43 million tonnes (Mt) of ROM coal considered in the project amendment report (AECOM 2020b) to 33 Mt;
- 30 Mt of coking coal considered in AECOM 2020b to 23 Mt; and
- 2 Mt of thermal coal considered in AECOM 2020b to 1.4 Mt.

The removal of LW107B and LW108B will also lead to a reduction in the volume of rejects from about 11.6 Mt to 9.7 Mt.

With the removal of LW107B and LW108B the life of the mine will be reduced from about 2035 as described in the project amendment report (AECOM 2020b) to about 2032 (ie reduction of about three years). Some surface works, rehabilitation and mine closure would be undertaken after the completion of mining activities.

The containment of the REA within the currently approved disturbance footprint will ensure that no native vegetation, particularly the Shale Sandstone Transition Forest (SSTF) endangered ecological community, will be required to be cleared for the REA. However, to accommodate the reduced footprint, the height of the REA will be increased by 10 m from a top of reduced level (RL) 310 m that was proposed in the project amendment report (AECOM 2020b) to a top of RL 320 m.

The changes to the layout of the ventilation shafts and associated transmission line easements are aimed at reducing clearing of the SSTF during their construction.

All other aspects of the Project remain the same as those documented in the project amendment report (AECOM 2020b).

3 Noise and vibration assessment

3.1 Introduction

The EPA's advice with regard to the Noise and Vibration Impact Assessment (NVIA) report (EMM February 2020) prepared to accompany the project amendment report (AECOM 2020b) was as follows:

The EPA considers that the water, noise and air impact assessments now satisfactorily meet the EPA's guidelines for consideration of environmental impacts from the proposal and can be used in determination of the project.

Hence, this report addresses the proposed design changes associated with the second amendment to the project only.

3.2 Noise modelling

The NVIA (EMM February 2020) considered three stages representative of the life of the project; Stage 2, Stage 4 and Stage 5. Equipment was modelled within the REA representative of each of these stages at the original proposed maximum REA height of RL 310 m. The REA height increase is proposed to occur in the areas previously considered as Stages 2 and 4 however the elevation increase will occur during Stage 6 of the project. The noise model has been updated in terms of the equipment locations assumed for Stages 2 and 4. Figures showing assumed equipment locations are provided in Appendix A.

It is noted that purchase of the residence at 185 Charlies Point Road, Bargo is currently under negotiation between Tahmoor Coal and the landowner.

Noise modelling has considered the proposed additional amendments to the project including the increased height of the REA and slight relocation of ventilation shaft TSC1. All other modelling assumptions, including the incorporation of all feasible and reasonable noise mitigation measures, are the same as those utilised for the NIVA. This update has considered noise-enhancing meteorological conditions only.

Noise emission predictions are presented in table format in Appendix B. TSP noise emissions as a result of the second amendment to the Project are predicted to result in negligible changes (ie <1 dB) at all assessment locations compared to those presented in the NVIA for the amended project report.

Table 3.1 provides a summary of the number of assessment locations for each operational scenario (existing mine and each of the Stages considered) where predicted noise emissions are in the following categories:

- No more than 2 dB above PNTL;
- 3-5 dB above PNTL; and
- More than 5 dB above PNTL.

In addition, a comparison has been made to the outcomes of the NVIA for the Amended Project Report (EMM February 2020) for each of the stages considered.

Predicted noise impacts from all considered stages of the mitigated updated amended project have been categorised as per Table 1 of the VLAMP with reference to noise predictions under noise-enhancing weather conditions. These categorisations are displayed spatially in Appendix C.

Table 3.1 Noise assessment summary

	Number of assessment locations within each category														
	Existing Tahmoor mine ¹			Stage 2 mitigated ¹			Stage 2 mitigated inc Stage 6 REA height			Stage 4 mitigated ¹			Stage 4 mitigated inc Stage 6 REA height		
Noise-enhancing	Day	Eve	Night	Day	Evening	Night	Day	Evening	Night	Day	Evening	Night	Day	Evening	Night
No more than 2 dB above PNTL	2753	2715	2650	2753	2723	2734	2751	2720	2733	2757	2725	2734	2754	2726	2732
3-5 dB above PNTL	5	24	73	6	29	19	7	30	19	2	27	19	4	26	20
More than 5 dB above PNTL	1	19	33	0	6	3	0	7	3	0	6	3	0	5	3

1. As presented in the NVIA prepared for the Amended Project Report.

Key points from the operational noise assessment are summarised as follows:

- Consistent with findings presented in the NVIA for the Amended Project report, the Project, inclusive of the second amendments, is expected to reduce noise emissions at all assessment locations compared to existing levels by at least 2 dB and by up to 11 dB at assessment locations during the more sensitive night-time period.
- Predicted noise levels from the second amended project show (consistent with those presented in the NVIA) a significant reduction in the number of privately-owned dwellings affected by mine noise emissions more than 5 dB above the relevant PNTL compared to existing mine noise.
- Categorising residual noise impacts in accordance with the VLAMP noise impact categories results in three residential properties classified as significantly affected (refer Appendix C). This is the same outcome as that presented in the NVIA (EMM February 2020).
- In some cases, locations categorised as significant are relatively further from the mine than those with a moderate or marginal impact category. This is due to several factors including rounding of noise predictions, local topographical features and the relative PNTLs for these locations (intrusive and amenity). This outcome is consistent with the previous NVIA (EMM February 2020).

This report has not considered construction activity at the vent fan sites. The findings and recommendations presented in Section 7.3 of the NVIA (EMM February 2020) are still considered relevant in relation to the management of construction noise impacts.

3.3 Achievable noise levels

Table 6.7 of the NVIA provided a summary of the predicted noise levels at ten locations around the mine which are representative of the potentially most exposed to mine noise (refer Figure 3.1) and likely to form the basis of a future noise compliance monitoring program. Achievable noise emissions inclusive of the proposed design changes associated with the second project amendment are provided in Table 3.2. These are mostly unchanged from the amended project NVIA with the following exceptions:

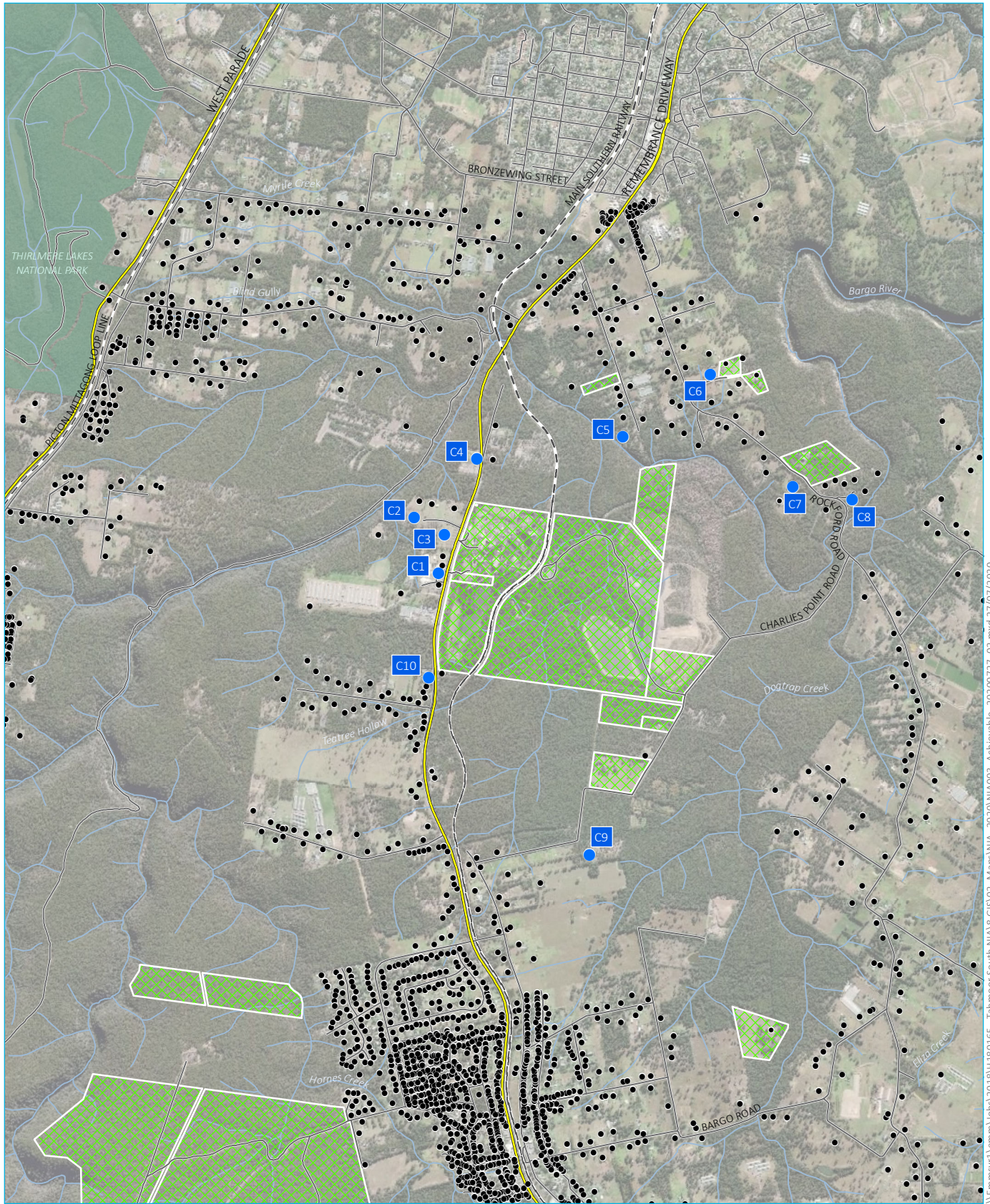
- day and evening noise levels at location C5 have increased by 1 dB;
- day and evening noise levels at location C7 have increased by 1 dB; and
- day and evening noise levels at location C8 have increased by 2 dB.

The Project noise levels presented in Table 3.2 are highest of all stages considered (including Stage 5 from the previous NVIA (EMM February 2020)).

Table 3.2 Predicted 'achievable' noise levels (noise enhancing)

Ref.	Location			PNTL			Existing			Project		
	X	Y	Description	Day	Eve	Night	Day	Eve	Night	Day	Eve	Night
C1	276653	6207152	Wollondilly Anglican Church	53	53	n/a	57	60	60	51	53	51
C2	276472.9	6207650	Western end of Olive Lane	47	47	43	52	55	55	47	49	46
C3	276741	6207616	Eastern end of Olive Lane	51	48	43	54	57	57	52	52	49
C4	276936.3	6208105	2900 Remembrance Drive	51	48	43	46	46	46	46	46	43
C5	278017.5	6208249	Southern end of Stratford Road	41	41	41	43	43	43	45	45	38
C6	278663.1	6208711	Eastern end of Hodgson Grove	40	40	35	39	39	39	40	40	32
C7	279273	6207883	Rockford Road	40	35	35	38	38	38	41	41	34
C8	279711.4	6207784	Kammer Place	40	35	35	33	33	33	37	37	<30
C9	277768	6205158	80 Charlies Point Road	40	39	35	37	37	37	38	38	32
C10	276577.5	6206476	3076 Remembrance Drive	49	42	35	43	43	43	43	43	41

Notes: 1. Noise level predictions presented in this table considers the NPfl LFN modifying factor.



Source: EMM (2020); DFSI (2017)

KEY

- Location for achievable noise levels
- Assessment location
- ▨ Tahmoor-owned land
- - Rail line
- Main road
- Local road
- Watercourse / drainage line
- NPWS reserve

Achievable noise level locations

Tahmoor South - second amendment project
 Noise and vibration impact assessment
 Figure 3.1

\\emmsvr1\emms\Jobs\2018\180165 - Tahmoor South NIA & GIS\02_Maps\NIA_2020\NIA003_Achievable_20200727_02.mxd 27/07/2020

4 Conclusion

EMM has undertaken an assessment of the potential noise impacts associated with the second project amendment of the Tahmoor South Project.

The proposed change in height of the REA and the slight relocation of the TSC1 ventilation shaft results in negligible (up to 2 dB) change to the noise impacts presented in the NVIA (EMM 2020).

References

AECOM 2018, *Tahmoor South Project - Environmental Impact Statement*, prepared for Tahmoor Coal Pty Ltd by AECOM Australia Pty Ltd.

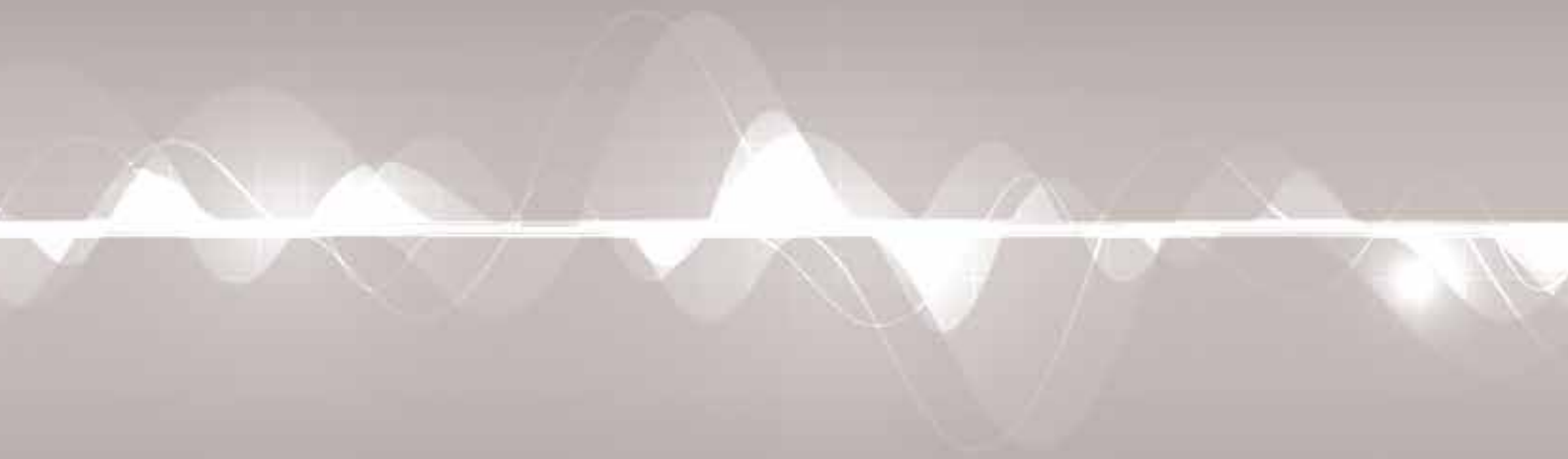
AECOM 2020a, *Tahmoor South Project - Response to Submissions*, prepared for Tahmoor Coal Pty Ltd by AECOM Australia Pty Ltd.

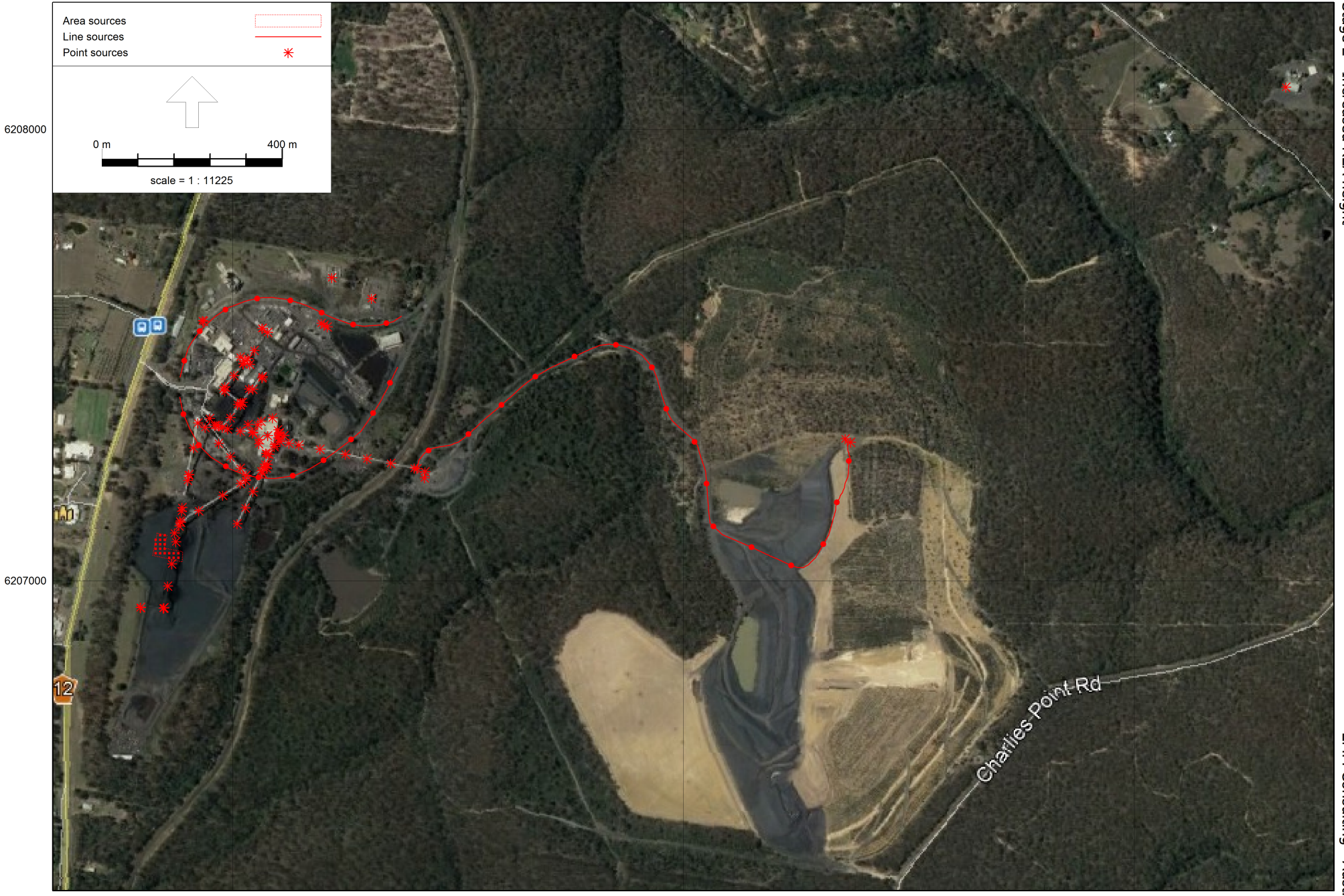
AECOM 2020b, *Tahmoor South Project - Project Amendment Report*, prepared for Tahmoor Coal Pty Ltd by AECOM Australia Pty Ltd.

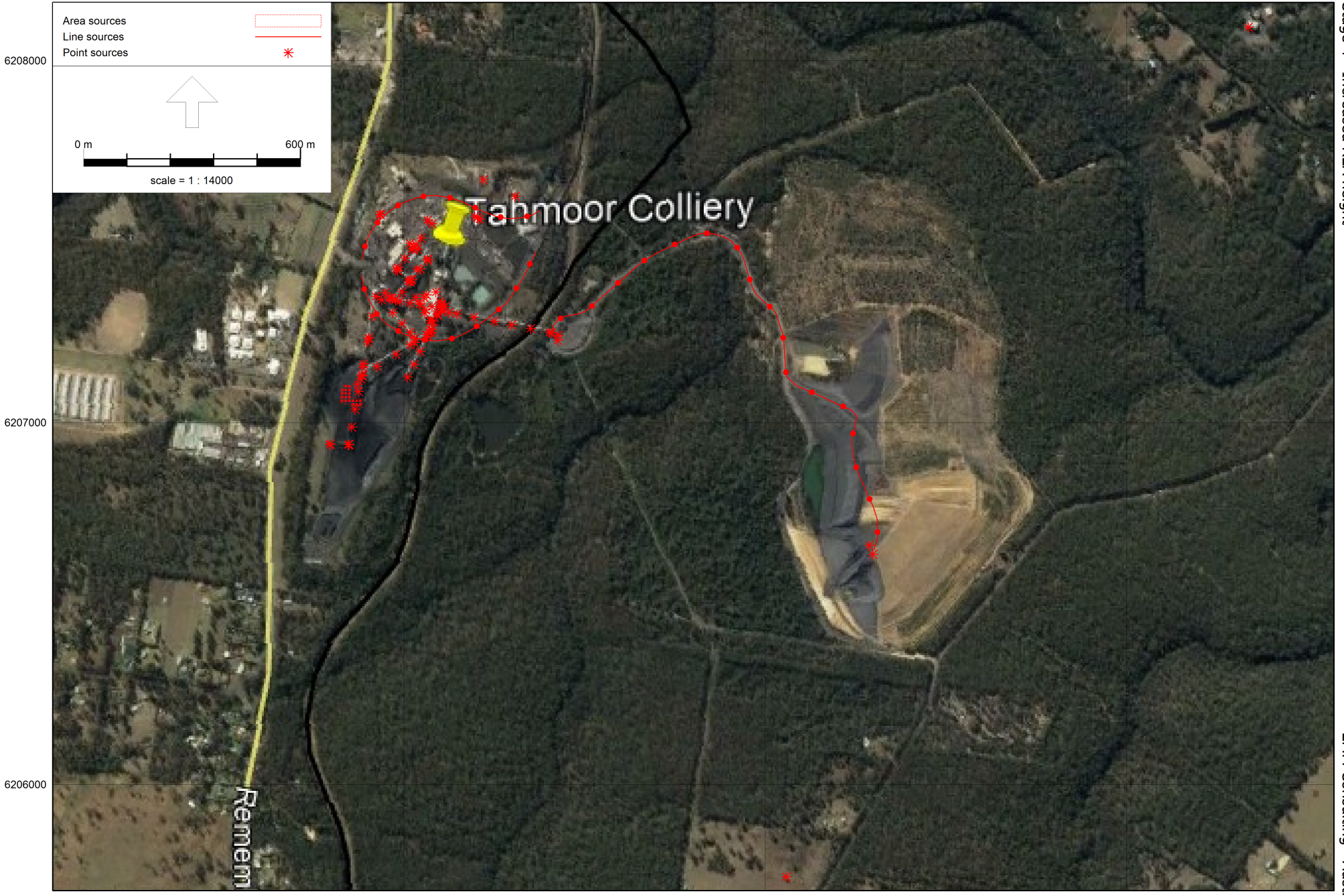
EMM February 2020, *Tahmoor South Project Amended Project – Noise and Vibration Impact Assessment*, prepared for Tahmoor Coal Pty Ltd by EMM Consulting Pty Limited.

Appendix A

Noise modelling - source locations

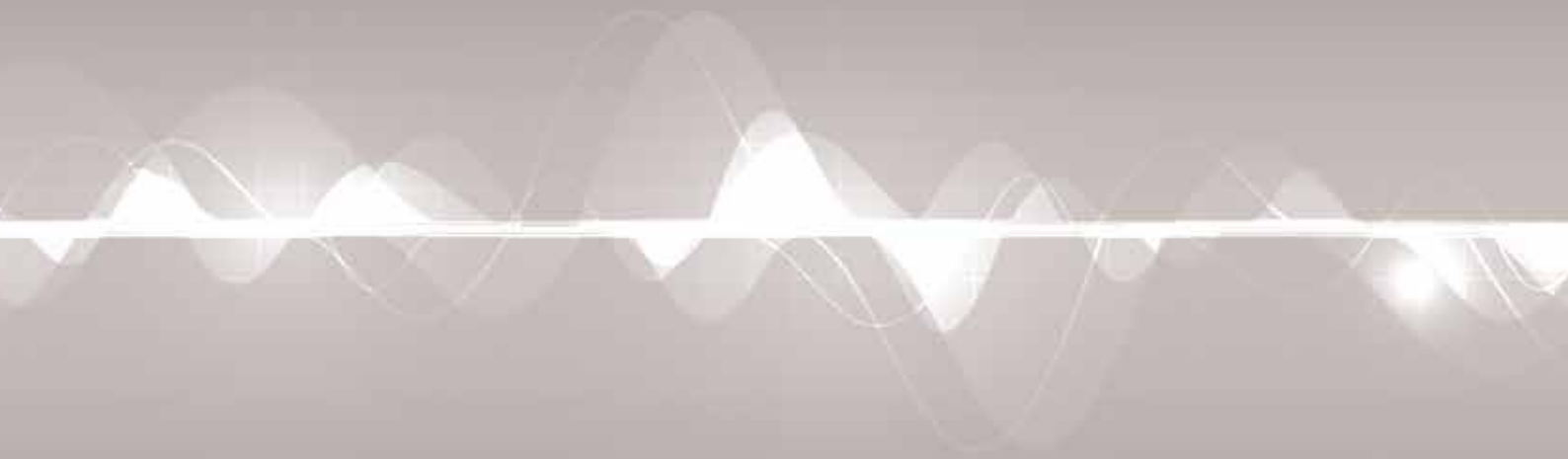






Appendix B

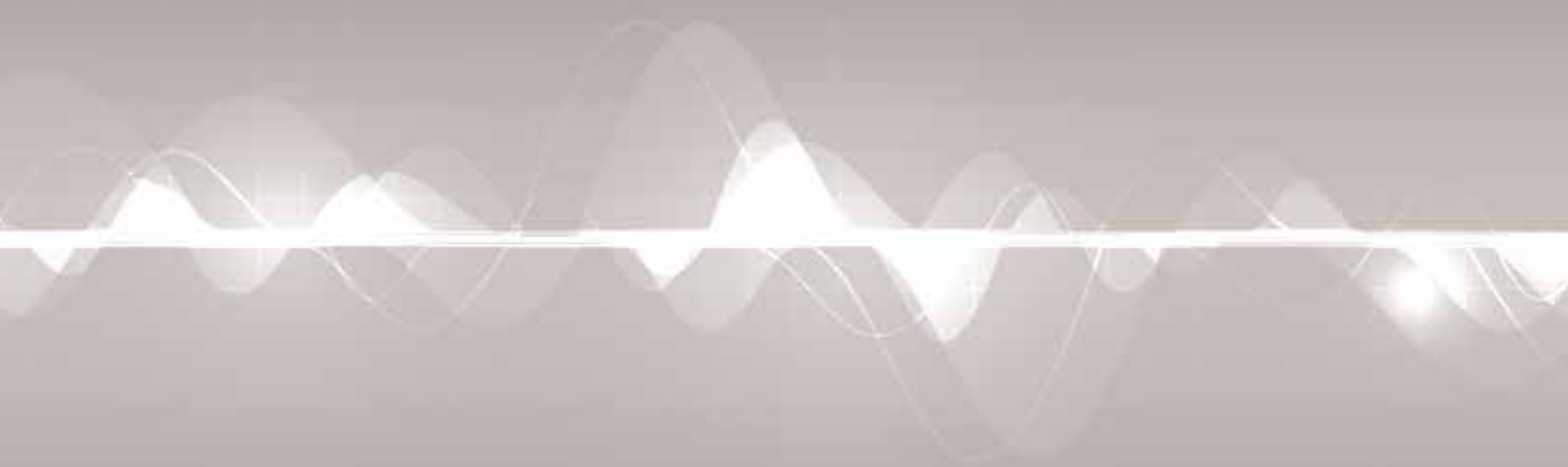
Noise modelling results

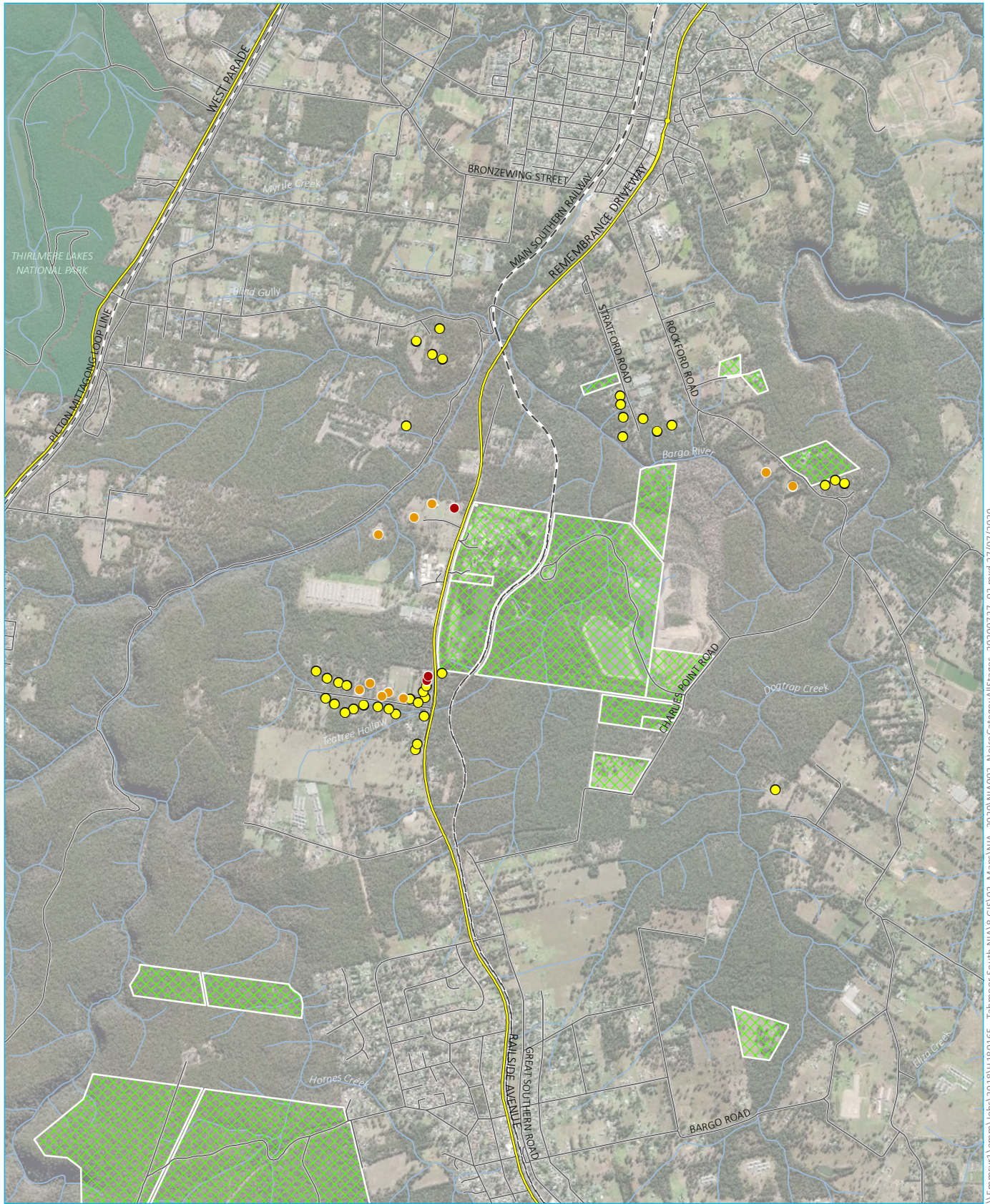


X	Y	NCA	Property Details	Stage 2 Mitigated REA at RL315m Inv2ms exc Constrn																			Noise impact category	Stage 4 (Stage 6) Mitigated Inv2ms											
				PNTL		PANL		Predicted						Compare to PNTL			Compare to PANL			Compare to Existing				Compare to PNTL						Compare to Existing			Noise impact category		
				Day	Evening/Night	Day	Evening/Night	Day	Evening/Night	Day	Evening/Night	Day	Evening/Night	Day	Evening/Night	Day	Evening/Night	Day	Evening/Night	Day	Evening/Night	Day		Evening/Night	Day	Evening/Night	Day	Evening/Night	Day	Evening/Night	Day	Evening/Night		Day	Evening/Night
274959.77	6208642.57	7		40	35	35	53	48	43	32.35	32.35	28.85	-7.65	-2.65	-6.15	-20.65	-15.65	-14.15	-2.75	-2.85	-6.35	32.31	32.31	28.88	-7.69	-2.69	-6.12	-20.69	-15.69	-14.12	-2.89	-2.89	-6.32		
274407.95	6208799.36	7		40	35	35	53	48	43	30.22	30.22	26.15	-9.78	-4.78	-8.85	-22.78	-17.78	-16.85	-2.79	-2.79	-6.86	30.23	30.23	26.20	-9.77	-4.77	-6.12	-20.67	-15.67	-16.80	-2.78	-2.78	-6.31		
275731.09	6209125.81	7		40	35	35	53	48	43	34.15	34.15	30.40	-5.85	-0.85	-4.60	-18.85	-13.85	-12.60	-2.11	-2.11	-5.86	34.07	34.07	30.43	-5.93	-0.93	-4.57	-18.93	-13.93	-12.57	-2.19	-2.19	-5.83		
276367.61	6208832.13	7		40	35	35	53	48	43	35.04	35.04	28.84	-4.96	0.04	-6.16	-17.96	-12.96	-14.16	-0.69	-0.69	-6.89	34.94	34.94	28.89	-5.06	-0.06	-6.11	-18.06	-13.06	-14.11	-0.79	-0.79	-6.84		
275293.51	6208732.36	7		40	35	35	53	48	43	33.33	33.33	30.02	-4.49	-1.49	-4.98	-19.49	-14.49	-12.98	-2.23	-2.23	-5.72	33.50	33.50	30.07	-4.50	-1.50	-4.93	-19.50	-14.50	-12.93	-2.24	-2.24	-5.74		
275668.82	6208979.55	7		40	35	35	53	48	43	33.98	33.98	30.41	-6.02	-1.02	-4.59	-19.02	-14.02	-12.59	-2.29	-2.29	-5.86	33.94	33.94	30.44	-6.06	-1.06	-4.56	-19.06	-14.06	-12.56	-2.33	-2.33	-5.83		
275057.33	6209031.74	7		40	35	35	53	48	43	33.86	33.86	30.30	-6.14	-1.14	-4.70	-19.14	-14.14	-12.70	-2.14	-2.14	-5.70	33.72	33.72	30.35	-6.28	-1.28	-4.65	-19.28	-14.28	-12.65	-2.28	-2.28	-5.65		
274662.62	6209167.17	7		40	35	35	53	48	43	30.56	30.56	26.48	-9.44	-4.44	-8.52	-22.44	-17.44	-16.52	-2.31	-2.31	-6.39	30.40	30.40	26.53	-9.60	-4.60	-8.47	-22.60	-17.60	-16.47	-2.47	-2.47	-6.34		
274949.77	6209139.71	7		40	35	35	53	48	43	31.38	31.38	27.69	-8.62	-3.62	-7.31	-21.62	-16.62	-15.31	-2.32	-2.32	-6.01	31.33	31.33	27.74	-8.67	-3.67	-7.26	-21.67	-16.67	-15.26	-2.37	-2.37	-5.96		
274435.45	6208979.88	7		40	35	35	53	48	43	30.34	30.34	25.99	-9.66	-4.66	-9.01	-22.66	-17.66	-17.01	-2.29	-2.29	-6.64	30.31	30.31	26.05	-9.69	-4.69	-8.95	-22.69	-17.69	-16.95	-2.32	-2.32	-6.58		
274669.92	6209125.04	7		40	35	35	53	48	43	30.58	30.58	26.67	-9.42	-4.42	-8.33	-22.42	-17.42	-16.33	-2.40	-2.40	-6.31	30.57	30.57	26.72	-9.43	-4.43	-8.28	-22.43	-17.43	-16.28	-2.41	-2.41	-6.26		
274923.07	6208979.85	7		40	35	35	53	48	43	31.52	31.52	27.93	-8.48	-3.48	-7.07	-21.48	-16.48	-15.07	-2.55	-2.55	-6.14	31.47	31.47	27.98	-8.53	-3.53	-7.02	-21.53	-16.53	-15.02	-2.60	-2.60	-6.09		
274808.08	6209102.37	7		40	35	35	53	48	43	30.86	30.86	27.06	-9.14	-4.14	-7.94	-22.14	-17.14	-15.94	-2.43	-2.43	-6.23	30.84	30.84	27.11	-9.16	-4.16	-7.89	-22.16	-17.16	-15.89	-2.45	-2.45	-6.18		
274865.27	62091143.91	7		40	35	35	53	48	43	31.06	31.06	27.36	-8.94	-3.94	-7.64	-21.94	-16.94	-15.64	-2.31	-2.31	-6.01	31.02	31.02	27.40	-8.98	-3.98	-7.60	-21.98	-16.98	-15.60	-2.35	-2.35	-5.97		
275389.51	6209211.63	7		40	35	35	53	48	43	32.76	32.76	29.11	-7.24	-2.24	-5.89	-20.24	-15.24	-13.89	-2.19	-2.19	-5.84	32.62	32.62	29.13	-7.38	-2.38	-5.87	-20.38	-15.38	-13.87	-2.33	-2.33	-5.82		
274681.71	6209228.76	7		40	35	35	53	48	43	30.31	30.31	26.36	-9.69	-4.69	-8.64	-22.69	-17.69	-16.64	-2.27	-2.27	-6.22	30.13	30.13	26.41	-9.87	-4.87	-8.59	-22.87	-17.87	-16.59	-2.45	-2.45	-6.17		
274581.46	6209185.71	7		40	35	35	53	48	43	30.25	30.25	26.17	-9.75	-4.75	-8.83	-22.75	-17.75	-16.83	-2.33	-2.33	-6.41	30.12	30.12	26.22	-9.88	-4.88	-8.78	-22.88	-17.88	-16.78	-2.46	-2.46	-6.36		
274535.14	6209138.03	7		40	35	35	53	48	43	30.01	30.01	26.02	-9.94	-4.94	-8.98	-22.94	-17.94	-16.98	-2.48	-2.48	-6.52	30.05	30.05	26.07	-9.95	-4.95	-8.93	-22.95	-17.95	-16.93	-2.49	-2.49	-6.47		
274606.26	6209242.34	7		40	35	35	53	48	43	30.03	30.03	26.05	-9.97	-4.97	-8.95	-22.97	-17.97	-16.95	-2.37	-2.37	-6.35	29.85	29.85	26.11	-10.15	-5.15	-8.89	-23.15	-18.15	-16.89	-2.55	-2.55	-6.29		
274861.12	6208805.36	7		40	35	35	53	48	43	31.68	31.68	28.06	-8.32	-3.32	-6.94	-21.32	-16.32	-14.94	-2.75	-2.75	-6.37	31.63	31.63	28.11	-8.37	-3.37	-6.89	-21.37	-16.37	-14.89	-2.80	-2.80	-6.32		
275862.99	6209144.98	7		40	35	35	53	48	43	34.51	34.51	30.68	-5.49	-0.49	-4.32	-18.49	-13.49	-12.32	-1.89	-1.89	-5.72	34.45	34.45	30.70	-5.55	-0.55	-4.30	-18.55	-13.55	-12.30	-1.95	-1.95	-5.70		
276216.95	6209821.12	7		40	35	35	53	48	43	34.71	34.71	28.49	-5.29	-0.29	-4.51	-18.29	-13.29	-12.49	-1.77	-1.77	-6.99	34.61	34.61	28.55	-5.39	-0.39	-4.45	-18.39	-13.39	-12.45	-1.87	-1.87	-6.93		
275258.75	6209438.89	7		40	35	35	53	48	43	31.53	31.53	27.76	-8.47	-3.47	-7.24	-21.47	-16.47	-15.24	-2.25	-2.25	-6.02	31.50	31.50	27.81	-8.50	-3.50	-7.19	-21.50	-16.50	-15.19	-2.28	-2.28	-5.97		
275218.04	6208797.96	7		40	35	35	53	48	43	33.04	33.04	29.62	-6.96	-1.96	-5.38	-19.96	-14.96	-13.38	-2.56	-2.56	-5.98	33.01	33.01	29.69	-6.99	-1.99	-5.34	-19.99	-14.99	-13.34	-2.59	-2.59	-5.94		
275181.43	6208809.11	7		40	35	35	53	48	43	32.89	32.89	29.51	-7.11	-2.11	-5.49	-20.11	-15.11	-13.49	-2.52	-2.52	-5.90	32.87	32.87	29.56	-7.13	-2.13	-5.44	-20.13	-15.13	-13.44	-2.54	-2.54	-5.85		
275022.36	6209226.84	7		40	35	35	53	48	43	31.48	31.48	27.86	-8.52	-3.52	-7.14	-21.52	-16.52	-15.14	-2.26	-2.26	-5.88	31.42	31.42	27.90	-8.58	-3.58	-7.10	-21.58	-16.58	-15.10	-2.32	-2.32	-5.84		
274960.79	6209241.07	7		40	35	35	53	48	43	31.22	31.22	27.59	-8.78	-3.78	-7.41	-21.78	-16.78	-15.41	-2.30	-2.30	-5.93	31.17	31.17	27.64	-8.83	-3.83	-7.36	-21.83	-16.83	-15.36	-2.35	-2.35	-5.88		
276302.34	6209840.67	7		40	35	35	53	48	43	34.92	34.92	28.54	-5.08	-0.08	-6.46	-18.08	-13.08	-14.46	-0.66	-0.66	-7.04	34.75	34.75	28.59	-5.25	-0.25	-6.41	-18.25	-13.25	-14.41	-0.83	-0.83	-6.99		
274979.73	6208999.98	7		40	35	35	53	48	43	31.59	31.59	28.04	-8.41	-3.41	-6.96	-21.41	-16.41	-14.96	-2.51	-2.51	-6.06	31.45	31.45	28.09	-8.55	-3.55	-6.91	-21.55	-16.55	-14.91	-2.65	-2.65	-6.01		
274999.04	6209132.60	7		40	35	35	53	48	43	30.29	30.29	26.10	-9.70	-4.70	-8.90	-22.70	-17.70	-16.80	-2.47	-2.47	-6.53	30.22	30.22	26.14	-9.78	-4.78	-8.86	-22.78	-17.78	-16.69	-2.48	-2.48	-6.45		
274723.28	6209080.22	7		40	35	35	53	48	43	30.66	30.66	26.89	-9.34	-4.34	-8.11	-22.34	-17.34	-16.11	-2.62	-2.62	-6.39	30.65	30.65	26.94	-9.35	-4.35	-8.06	-22.35	-17.35	-16.06	-2.63	-2.63	-6.34		
274713.40	6209031.42	7		40	35	35	53	48	43	30.88	30.88	26.98	-9.12	-4.12	-8.02	-22.12	-17.12	-16.02	-2.49	-2.49	-6.39	30.92	30.92	27.03	-9.08	-4.08	-7.97	-22.08	-17.08	-15.97	-2.45	-2.45	-6.34		
274435.79	6208957.76	7		40	35	35	53	48	43	30.34	30.34	25.94	-9.66	-4.66	-9.06	-22.66	-17.66	-17.06	-2.36	-2.36	-6.76	30.34	30.34	25.99	-9.66	-4.66	-9.01	-22.66	-17.66	-17.01	-2.36	-2.36	-6.71		
274857.72	6209100.30	7		40	35	35	53	48	43	31.04	31.04	27.25	-8.96	-3.96	-7.75	-21.96	-16.96	-15.75	-2.43	-2.43	-6.22	31.01	31.01	27.30	-8.99	-3.99	-7.								

Appendix C

Noise impact categories





Source: EMM (2020); DFSI (2017)

KEY

- Rail line
- Main road
- Local road
- Watercourse / drainage line
- ▨ Tahmoor-owned land
- NPWS reserve

Noise impact category

- Marginal
- Moderate
- Significant

Noise impact categories – Tahmoor second amended project

Tahmoor South - second amendment project
Noise and vibration impact assessment
Appendix C

\\Emmsvr1\emms\Jobs\2018\180165 - Tahmoor South NIA & GIS\02_Maps\NIA_2020\NIA002_NoiseCategoryAllStages_20200727_02.mxd 27/07/2020



