



## **Tahmoor Colliery**

# **AMENDMENT TO NATURAL FEATURES SURFACE SAFETY AND SERVICEABILITY MANAGEMENT PLAN (REVISION H)**

## **DUE TO THE MINING OF LONGWALL 26**


**Xstrata Coal Tahmoor  
Tahmoor Colliery  
PO Box 100, Tahmoor NSW 2573  
Phone (02) 4640 0100 Fax (02) 4640 0140  
[www.xstrata.com](http://www.xstrata.com)**

**February 2011**

## GENERAL

### AUTHORISATION OF AMENDMENT TO:

*Tahmoor Colliery Longwalls 24 to 26 – Natural Features Surface Safety and Serviceability Management Plan, Revision H, Revision K, prepared by Tahmoor Colliery.*

Authorised on behalf of Tahmoor Colliery:	
Name:	IAN SHEPPARD
Signature:	
Position:	MANAGER, ENVIRONMENT & COMMUNITY
Date:	21-2-11                      TAHMOOR COLLIERY

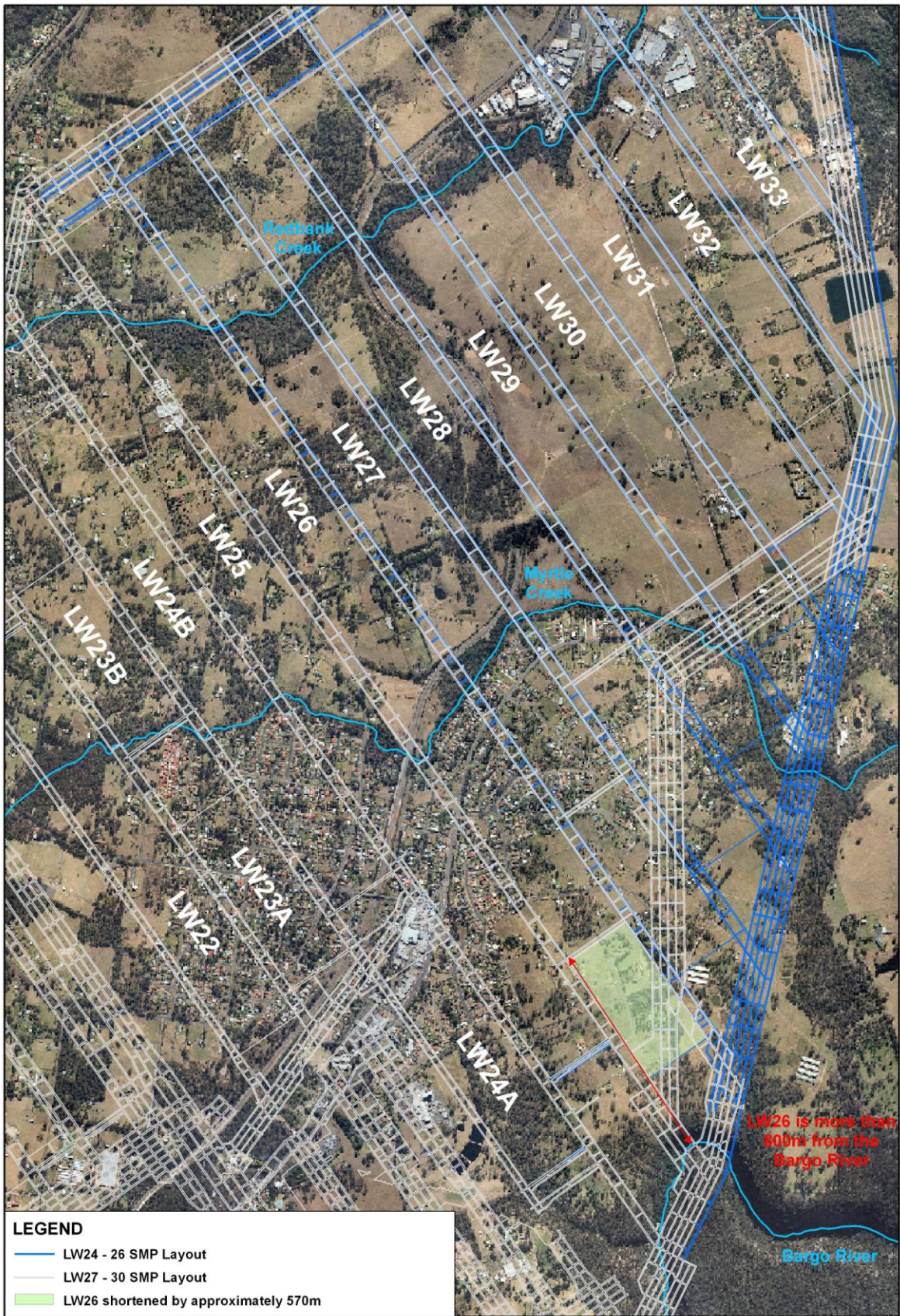
## CHAPTER 1. INTRODUCTION

### 1.1. Background

Longwall 26 is a continuation of a series of longwalls that extend into the Tahmoor North Lease area, which began with Longwall 22. Longwall 26 is currently scheduled to commence in March 2011.

This document amends the previous Management Plan (Rev. K). When compared to the previous Plan, the amended management measures in relation to the Bargo River have been reduced. The Plan has been amended because the current layout for Longwall 26 has been significantly shortened by approximately 571 metres compared to its previous layout. It is also noted that no impacts and minimal subsidence, valley closure and upsidence movements were observed during the mining of previous Longwalls 24A and 25, which extracted closer to the River.

The Bargo River is located more than 800 metres from Longwall 26, at the closest point. An aerial photograph, overlaid with the mine plan and predicted limit of subsidence is shown in Fig. 1.1.



**Fig. 1.1 Aerial Photograph overlaid with previous and current Mine Plan**

## **CHAPTER 2. AMENDMENTS TO MANAGEMENT PLAN**

The following sections of the Management Plan (Rev. H) have been amended.

### **2.1. Monitoring Plan (Section 3.10 of Management Plan)**

The monitoring measures have been reduced from those described in the Management Plan as described below.

#### **2.1.1. Ground Monitoring – Bargo River**

##### **Angle of Draw Monitoring Lines**

Angle of draw monitoring lines were installed at the ends of Longwalls 24A, 25 and 26 in November 2007, based on the previous mine layout.

The Longwall 26 Draw Line is substantially offset from the revised commencing end of Longwall 26 and is unlikely to experience significant subsidence movements during the mining of Longwall 26. For this reason, the survey frequency will be amended from monthly, as per the previous Management Plan, to once before and after the mining of Longwall 26.

As a substitute for the Longwall 26 Draw Line, it is proposed to monitor subsidence along the installed monitoring line on Greenacre Drive, whose location is shown in Fig. 2.1 of this Amendment. This line will be surveyed once a week, commencing after 200 metres of extraction.

If all pegs on the Greenacre Drive monitoring line are measured to subside more than 20 mm of subsidence during the mining of Longwall 26, Tahmoor Colliery will consider increasing the frequency of surveys on the Longwall 26 Draw Line.

##### **Valley Closure Monitoring Points and Rockbar Monitoring Lines**

Very small differential movements (close to or within survey tolerance) have been measured within the Bargo River valley closure monitoring points and Rockbar Monitoring lines during the mining of Longwalls 24A and 25.

Given that Longwall 26 will be more than 800 metres from the Bargo River, it is not proposed to monitor these survey lines during the mining of Longwall 26. This is an amendment from the previous Management Plan.

The survey marks will remain in place during mining so that they can be surveyed if unexpected ground movements are observed along Greenacre Drive or the Longwall 26 Draw Line during the mining of Longwall 26.

#### **2.1.2. Ground Monitoring – Myrtle and Redbank Creeks**

It is proposed to monitor across Myrtle and Redbank Creeks during the mining of Longwall 26. This amendment is an addition to the previous Management Plan. The locations and frequency of surveys are shown in Fig. 2.1 of this Amendment.

It is noted that monitoring of some of the proposed monitoring lines are subject to landowner approval.

#### **2.1.3. Water Level and Water Flow Monitoring – Bargo River**

It is not proposed to monitor water levels or water flows in the Bargo River. A request to remove monitoring equipment in the Bargo River was approved by Industry and Investment, NSW in November, 2009.

#### **2.1.4. Visual Inspections – Bargo River Gorge**

Given that Longwall 26 will be more than 800 metres from the Bargo River, it is not proposed to inspect the Bargo River Gorge for impacts during the mining of Longwall 26.

Visual inspections could recommence if unexpected ground movements are observed along Greenacre Drive or the Longwall 26 Draw Line during the mining of Longwall 26.

## **2.2. Trigger Action Response Plan (Section 3.11 of Management Plan)**

The Trigger Action Response Plan is amended to reflect the changes outlined in Section 2.1. The amendments relate only to reductions in monitoring of the Bargo River.

