



SIMEC

MEMBER OF



# Redbank Creek

## Corrective Management Action Plan

December 2021 | Newsletter #10

### Project Background

Tahmoor Coking Coal Operations (TCCO) has been operating since 1979, and produces premium quality coking coal, which is combined with iron in the steelmaking process for production of steel.

Redbank Creek is a tributary of the Nepean River. It generally consists of Hawkesbury Sandstone bedrock with a progressive series of rock bars and pools. TCCO's longwall panels have extracted coal below Redbank Creek from Longwall 25 to Longwall 32. Longwall mining has caused subsidence impacts that have resulted in fracturing of pool beds, causing some pools to only retain water after heavy periods of rain.

Subsidence movements within the vicinity of Redbank Creek have ceased, enabling TCCO to plan and implement a remediation project to restore the pools within Redbank Creek.

TCCO have prepared a Redbank Creek Corrective Management Action Plan (**Redbank Creek CMAP**) that outlines the proposed remediation works including creek characterisation, pool mapping and pool rehabilitation works. The Redbank Creek CMAP has been approved by the NSW Resources Regulator.

Works have been developed in consultation with and approved by relevant government departments including, Department of Planning, Industry and Environment (**DPIE**) – Resources Regulator, DPIE – Planning, Department of Primary Industries (**DPI**) – Fisheries, Natural Resources Access Regulator (**NRAR**), Wollondilly Shire Council and the Tahmoor Coal Community Consultative Committee.

### Progress Report

Mapping of pools, including detailed surveying, characterization drilling, and remediation of **eleven pools** and **two rock bars** (Pool 26 and Pool RR19) has been completed to date. Remediation of the rock bar involves the construction of a grout curtain wall at a depth of the fracture network. Boreholes are drilled at 2m apart, Polyurethane grout (PUR) is injected into holes to create an impermeable layer that redirect the water to the surface.

PUR has been used successfully for creek rehabilitation in Sydney Catchment Authority areas as it has minimal ecotoxicological effects and has proven highly effective.

Monitoring of the remediation sites suggests an increased capacity for the pools to hold water. Monitoring will continue throughout a variety of climatic conditions.

### Remediation of Rock Bar RB6

Remediation of Pool RB6 is currently ongoing and progressing well. The remediation strategy involves the construction of a 50m wide grout curtain wall to a depth of 18m where the fracture network has been detected. Stage 1 (2m depth), Stage 2 (6m depth) and Stage 3 (12m depth) have been completed with Stage 4 (18m depth) in progress. Completion of the current scope is expected at the end of December 2021

Preliminary results show an improvement of the pool holding capacity for pool RB6. Surface and groundwater monitoring are ongoing to assess the effectiveness of the remediation strategy through a variety of climatic conditions

Works will be conducted between **6:00 am to 5:00pm, Monday to Friday** and are expected to be completed in December 2021.

### For More Information

Email: [tahmoorenquiries@simecgfg.com](mailto:tahmoorenquiries@simecgfg.com)

T: (02) 4640 0100

MEMBER OF



T: (02) 4640 0100 E: [tahmoorenquiries@simecgfg.com](mailto:tahmoorenquiries@simecgfg.com) W: [www.tahmoorcoal.com.au](http://www.tahmoorcoal.com.au)

SIMEC Mining Site Address: 2975 Remembrance Drive, Bargo | Postal Address: PO Box 100, Tahmoor NSW 2573, Australia



SIMEC



**SIMEC**

MEMBER OF



# Redbank Creek

Corrective Management Action Plan

December 2021 | Newsletter #10

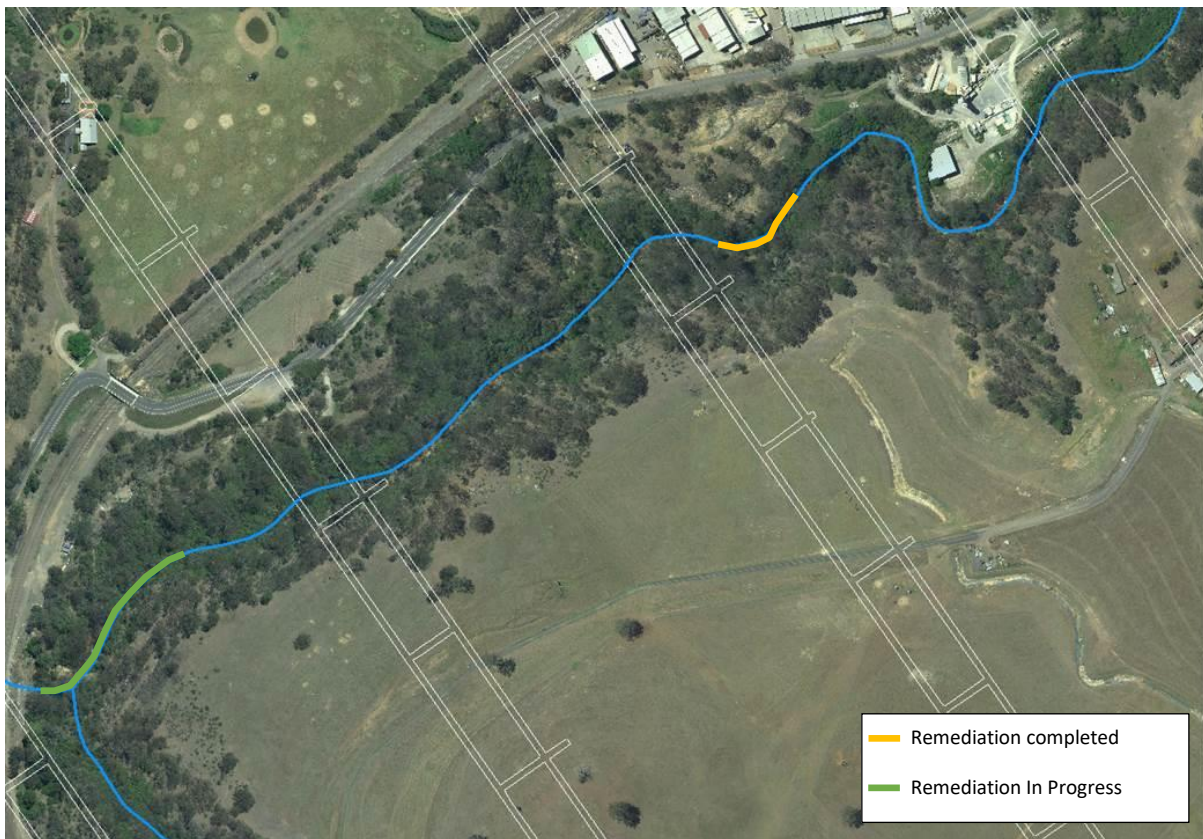


Figure 1: Location of Pools

MEMBER OF



T: (02) 4640 0100 E: [tahmoorenquiries@simecgfg.com](mailto:tahmoorenquiries@simecgfg.com) W: [www.tahmoorcoal.com.au](http://www.tahmoorcoal.com.au)

SIMEC Mining Site Address: 2975 Remembrance Drive, Bargo | Postal Address: PO Box 100, Tahmoor NSW 2573, Australia



**SIMEC**