



SIMEC

MEMBER OF



# Redbank Creek

## Corrective Management Action Plan

MARCH 2020 | Newsletter #3

### Project Background

Tahmoor Coking Coal Operations (TCCO) has been operating since 1979, and produces premium quality coking coal, which is combined with iron in the steelmaking process for production of steel.

Redbank Creek, is a tributary of the Nepean River. It generally consists of Hawkesbury Sandstone bedrock with a progressive series of rock bars and pools. TCCO's longwall panels have extracted coal below Redbank Creek from Longwall 25 to Longwall 32. Longwall mining has caused subsidence impacts that has resulted in fracturing of pool beds, such that some pools only retain water after heavy periods of rain.

Subsidence movements within the vicinity of Redbank Creek have now ceased, enabling TCCO to plan and implement a remediation project to restore the pools within Redbank Creek.

TCCO have prepared a Redbank Creek Corrective Management Action Plan (**Redbank Creek CMAP**) that outlines the proposed remediation works including creek characterisation, pool mapping and pool rehabilitation works. The Redbank Creek CMAP has been approved by the NSW Resources Regulator.

Works have been developed in consultation with and approved by relevant government departments including, Department of Planning, Industry and Environment (**DPIE**) – Resources Regulator, DPIE – Planning, Department of Primary Industries (**DPI**) – Fisheries, Natural Resources Access Regulator (**NRAR**), Wollondilly Shire Council and the Tahmoor Coal Community Consultative Committee.

### Progress Report

Pool mapping within Redbank Creek has been completed, allowing suitable pools to be selected for rehabilitation based on their individual characteristics and overall function.

Photogrammetry and detailed surveying of selected pools has been completed. Characterisation drilling is complete and pool remediation works has commenced.



### Characterisation Drilling

Characterisation drilling was completed in January 2020 and involved drilling cored holes along the banks of Redbank Creek to below the creek bed. Geological testing has been conducted to help understand the creek fracture network and groundwater interactions, which is crucial for future rehabilitation planning. The boreholes are then used to monitor groundwater quality and levels during rehabilitation and into the future (see over).

### Pool Remediation

Remediation of a series of five pools commenced in March 2020. Remediation involves drilling small holes to 2m before the injection of an approved polyurethane resin to effectively seal up fractures and assist the pools hold water. Polyurethane has been used successfully for creek rehabilitation in Sydney Catchment Authority areas as it has minimal ecotoxicological effects and has proven highly effective. Works are anticipated to be completed in late April.

Works will be conducted between **6:00am to 5:00pm, Monday to Friday**.

### Future Works

Future works are being planned at key locations at Redbank Creek. Works are aimed at drilling and injecting material into controlling features to enact a curtain wall, to seal fractures and return water to the surface.

### For More Information

Email:

[Tahmoorenquiries@simecmining.com](mailto:Tahmoorenquiries@simecmining.com)

Phone: +61 (02) 46 400 100

Fax: +61 (02) 46 400 140



SIMEC

T: (02) 4640 0100 E: [tahmoorenquiries@simecmining.com](mailto:tahmoorenquiries@simecmining.com) W: [www.tahmoorcoal.com.au](http://www.tahmoorcoal.com.au)

SIMEC Mining | Site Address: 2975 Remembrance Drive, Bargo | Postal Address: PO Box 100, Tahmoor NSW 2573, Australia



SIMEC

MEMBER OF

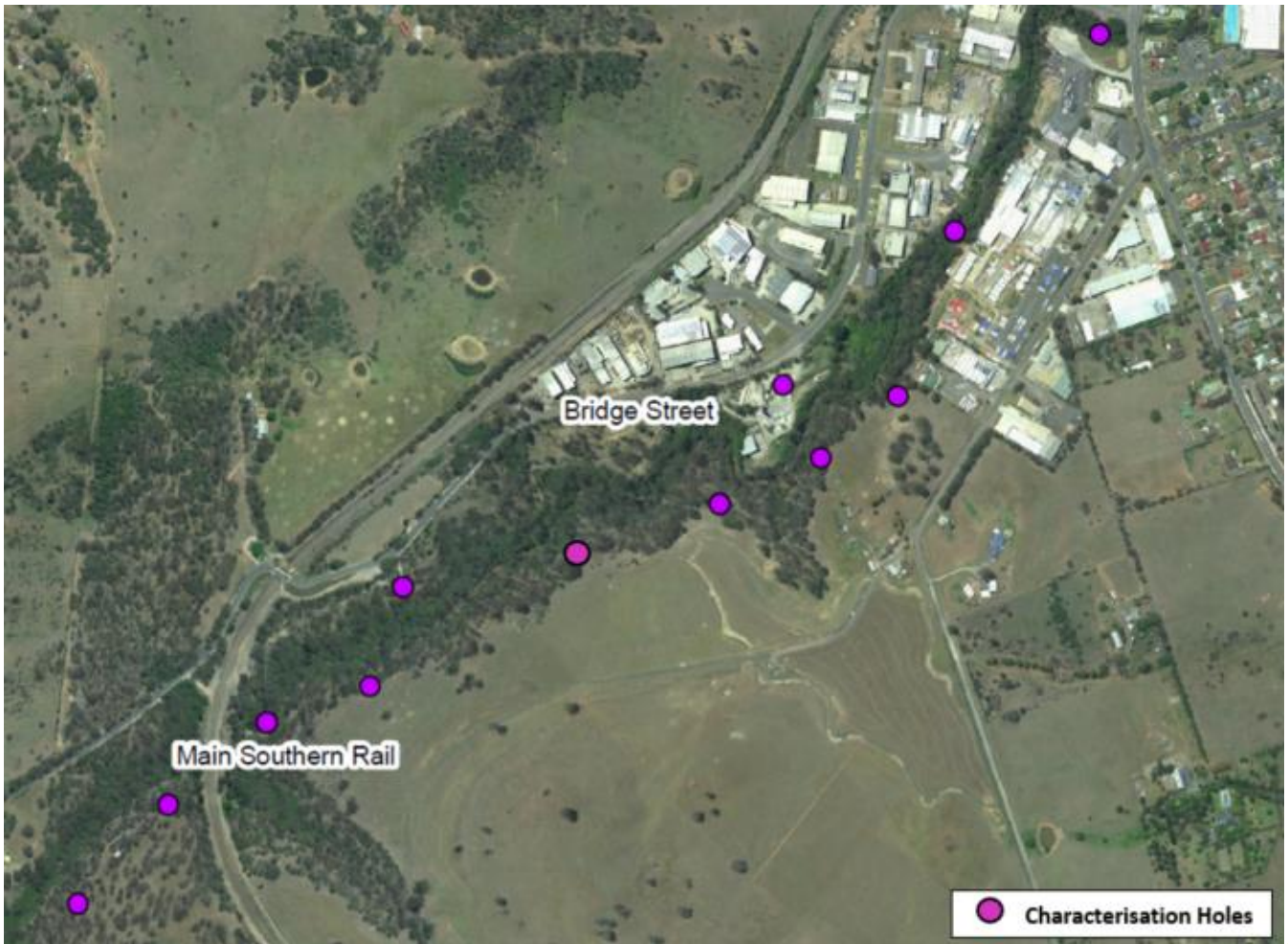


# Redbank Creek

Corrective Management Action Plan

MARCH 2020 | Newsletter #3

## Characterisation Drilling Locations



MEMBER OF



T: (02) 4640 0100 E: [tahmoorenquiries@simecgfg.com](mailto:tahmoorenquiries@simecgfg.com) W: [www.tahmoorcoal.com.au](http://www.tahmoorcoal.com.au)

SIMEC Mining Site Address: 2975 Remembrance Drive, Bargo | Postal Address: PO Box 100, Tahmoor NSW 2573, Australia



SIMEC