



**SIMEC**



# Tahmoor Coal Newsletter

Tahmoor South Domain

December 2022 | Newsletter 3

## Longwall South 1A mining update

Tahmoor Coal commenced mining of Longwall South 1A (LW S1A) on Tuesday 18 October 2022 and has since progressed 376.5m as of 8 December 2022 (refer to **Figure 1**).

Mining is progressing in a north-westerly direction at a rate of approximately 55m per week and LW S1A is due for completion in April 2023 (subject to change pending operations).

Low levels of subsidence (20mm or less) are currently being observed in the back-bushland area of the Australian Wildlife Sanctuary.

Please be advised our contracted Building Inspector, Adam Walker from Building Inspection Services and SMEC Australia Surveyors will continue to be in the local area each week conducting inspections and surveys to monitor ground movements.

## Pre-Mining Inspections for Longwall South 4A

Pre-Mining Inspections (PMIs) for properties located above Longwall S4A have been delayed and will now commence in early 2023. If you have already registered for a PMI, we will be in contact with you in late January/early February 2023 to schedule your inspection.

PMIs assist with a smooth claim assessment process should you need to lodge a claim for damage. If you would like a PMI and are yet to register, please email Tahmoor Coal at [tahmoorenquiries@simecgfg.com](mailto:tahmoorenquiries@simecgfg.com) or phone 02 4640 0025.

## Survey marker installation

Installation of survey markers around residential structures and pools have commenced. The purpose of the survey markers is to measure the subsidence occurring at the individual property.

The markers are used to help quantify movements and assist with the assessment of claims if an impact has been visually observed to a building or structure. Markers are placed in discrete locations flush to the ground.

**For added peace of mind, we strongly encourage you to register for a PMI and survey marker installation.**

## New Tahmoor Coal website has launched

Tahmoor Coal launched its new and improved website this week at [www.tahmoorcolliery.com.au](http://www.tahmoorcolliery.com.au). Redirects have been set up from the former sites allowing for a smooth transition. You can access the latest newsletters, mine plans, environmental monitoring data and further information about Tahmoor Mine.

Check it out and let us know if there's something you can't find or more information you would like to see!

## Coal Mine Subsidence Compensation Act Review

NSW Government is inviting public comment on the *Coal Mine Subsidence Compensation Act 2017* (the Act) to make sure the laws are still appropriate and fair for everyone.

**Have your say by midnight on Monday 19 December 2022** at [www.haveyoursay.nsw.gov.au/mining-subsidence](http://www.haveyoursay.nsw.gov.au/mining-subsidence).

Comments are welcome on any matters that are relevant to improving the framework around coal mine subsidence compensation in NSW.

## Merry Christmas from Tahmoor Coal

As another busy year comes to an end, we thank you for your cooperation and patience during our mining operations in 2022.

From all of us here at Tahmoor Coal, we wish you and your family and friends a safe and happy holiday season. May the new year bring you good health, joy and prosperity.

## Important Contact Information

### Tahmoor Coal Pty Ltd

Tahmoor Coal Reception: (02) 4640 0100

General information: (24hrs) hotline: 1800 154 415

Email: [tahmoorenquiries@simecgfg.com](mailto:tahmoorenquiries@simecgfg.com)

Web: [www.tahmoorcolliery.com.au](http://www.tahmoorcolliery.com.au)

### Subsidence Advisory NSW

24 Hour Emergency Hotline: 1800 248 083

Office phone: (02) 4677 6500

Email: [subsidenceadvisory@customerservice.nsw.gov.au](mailto:subsidenceadvisory@customerservice.nsw.gov.au)

Web: [www.nsw.gov.au/subsidence-advisory](http://www.nsw.gov.au/subsidence-advisory)

# Tahmoor Coal – Current Mine Plan

Figure 1 highlights the location of Longwall S1A in yellow.

- The blue hashed line (predicted 20mm Subsidence Area) indicates the area predicted to be impacted by subsidence from LW S1A mining.
- The grey areas in the figure depict areas that have previously been mined in the Tahmoor North area.

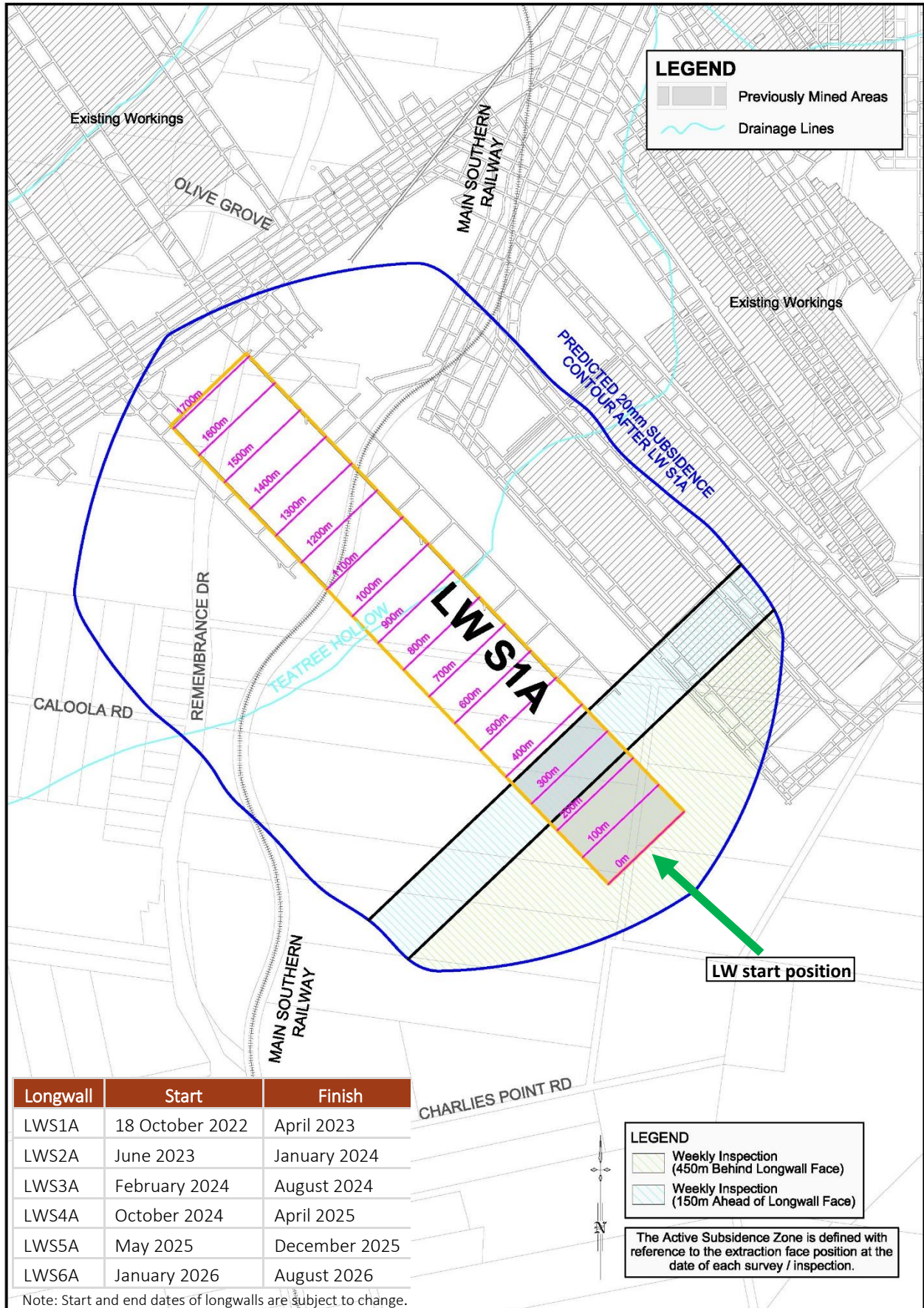


Figure 1 – Longwall South 1A active subsidence zone