



SIMEC

MEMBER OF



Tahmoor Coking Coal Newsletter

Tahmoor South Domain

August 2023 | Newsletter 7

Longwall South 2A mining commenced

Tahmoor Coking Coal commenced mining of Longwall South 2A (LW S2A) on Wednesday 2 August 2023 and has since progressed 27.5m as of 7 August 2023 (see **Figure 1**).

Mining is progressing in a north-westly direction and is due for completion in February 2024 (timing subject to operations).

As the longwall progresses, Tahmoor Coking Coal will be offering weekly precautionary visual inspections during the active subsidence periods for properties containing swimming pools and farm dams.

Pre-Mining Inspections for LWs S3A and S4A

There are still a few properties remaining along Remembrance Driveway and Caloola Road to book in a Pre-Mining Inspection (PMI) and survey marker installation. Please contact us as soon as possible if you would like this free inspection conducted for your property.

PMIs assist with a smooth claim assessment process should you need to lodge a claim for any damage. Survey markers measure subsidence occurring at individual properties and help quantify movements if impacts occur.

Phone Tahmoor Coking Coal on 02 4640 0025 or email tahmoorenquiries@simecgfg.com to book.

Contact Information

Tahmoor Coal Pty Ltd

Reception: (02) 4640 0100

General information: (24hrs) hotline: 1800 154 415

Email: tahmoorenquiries@simecgfg.com

Web: www.tahmoorcolliery.com.au

Subsidence Advisory NSW

24 Hour Emergency Hotline: 1800 248 083

Office phone: (02) 4677 6500

Email: subsidenceadvisory@customerservice.nsw.gov.au

Web: www.nsw.gov.au/subsidence-advisory

Buxton Youth Day community grant

Tahmoor Coking Coal recently assisted Neighbourhood Watch Wollondilly with a community grant for the Buxton Youth Day Skate & Paint Workshop in July.

The Youth Day included a skate workshop, pop-up musical instruments, Aboriginal dot painting, boomerang throwing, leaf painting, educational workshops and more.

Secretary of Neighbourhood Watch Wollondilly, Pam Browne said *"It was great to see the kids trying out all the activities... amazing I didn't see one mobile phone. And it was pleasing to have the parents being involved."*

Buxton Youth Day was attended by over 300 locals for free youth and family activities at Telopea Park.



Tahmoor Coking Coal – Current Mine Plan

Figure 1 highlights the location of Longwall S2A in yellow.

- The blue line (predicted 20mm Subsidence Area) indicates the area predicted to experience subsidence from LW S2A mining.
- The grey shading depicts the previously mined areas, including the recently mined LW S1A.
- The green and blue areas are active subsidence zone where weekly inspections are carried out. Green being 450m behind the longwall face and blue being 150m in front of the longwall face.

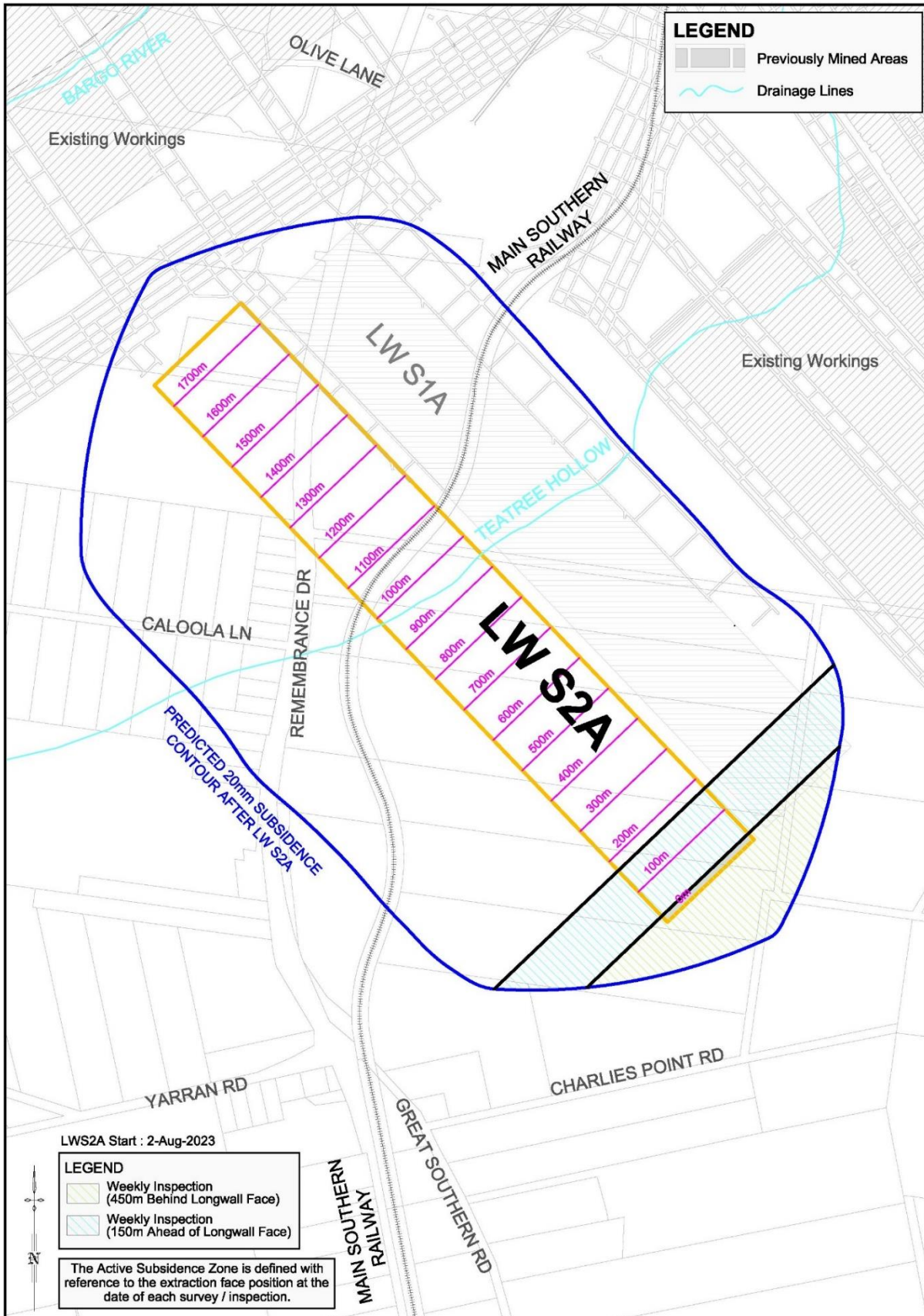


Figure 1 – Longwall South 2A subsidence zone