



SIMEC



Tahmoor Coking Coal Newsletter

Tahmoor South Domain
October 2023 | Newsletter 8

Longwall South 2A mining update

Tahmoor Coking Coal commenced mining of Longwall South 2A (LW S2A) on Wednesday 2 August 2023 and has since progressed 507m as of 9 October 2023 (see **Figure 1**).

Mining is progressing in a north-westly direction at a rate of approximately 55m per week and is due for completion in February 2024 (timing subject to operations).

The predicted maximum total vertical subsidence for LW S2A is 900mm. Subsidence levels are tracking below predictions with 779mm observed in the back-bushland area of the Australian Wildlife Sanctuary.

September community events

Tahmoor Coking Coal sponsored and attended the Wollondilly Anglican College Country Fair and Illuminate Wollondilly Festival of Art and Light last month.

At the Country Fair, over 400 participants enjoyed a PBJ mine car ride. We also hosted stalls at both events for everyone to experience a Virtual Reality (VR) underground tour and learn about how our coking coal is used in the steelmaking process.

These are wonderful local community events to participate in, and we thank everyone who stopped by for a visit.



Contact Information

Tahmoor Coal Pty Ltd

Reception: (02) 4640 0100

General information: (24hrs) hotline: 1800 154 415

Email: tahmoorenquiries@simecgfg.com

Web: www.tahmoorcolliery.com.au

Subsidence Advisory NSW

24 Hour Emergency Hotline: 1800 248 083

Office phone: (02) 4677 6500

Email: subsidenceadvisory@customerservice.nsw.gov.au

Web: www.nsw.gov.au/subsidence-advisory

Tahmoor Coking Coal – Current Mine Plan

Figure 1 highlights the location of Longwall S2A in yellow.

- The blue line (predicted 20mm Subsidence Area) indicates the area predicted to experience subsidence from LW S2A mining.
- The grey shading depicts the previously mined areas, including the recently mined LW S1A.
- The green and blue areas are active subsidence zone where weekly inspections are carried out. Green being 450m behind the longwall face and blue being 150m in front of the longwall face.

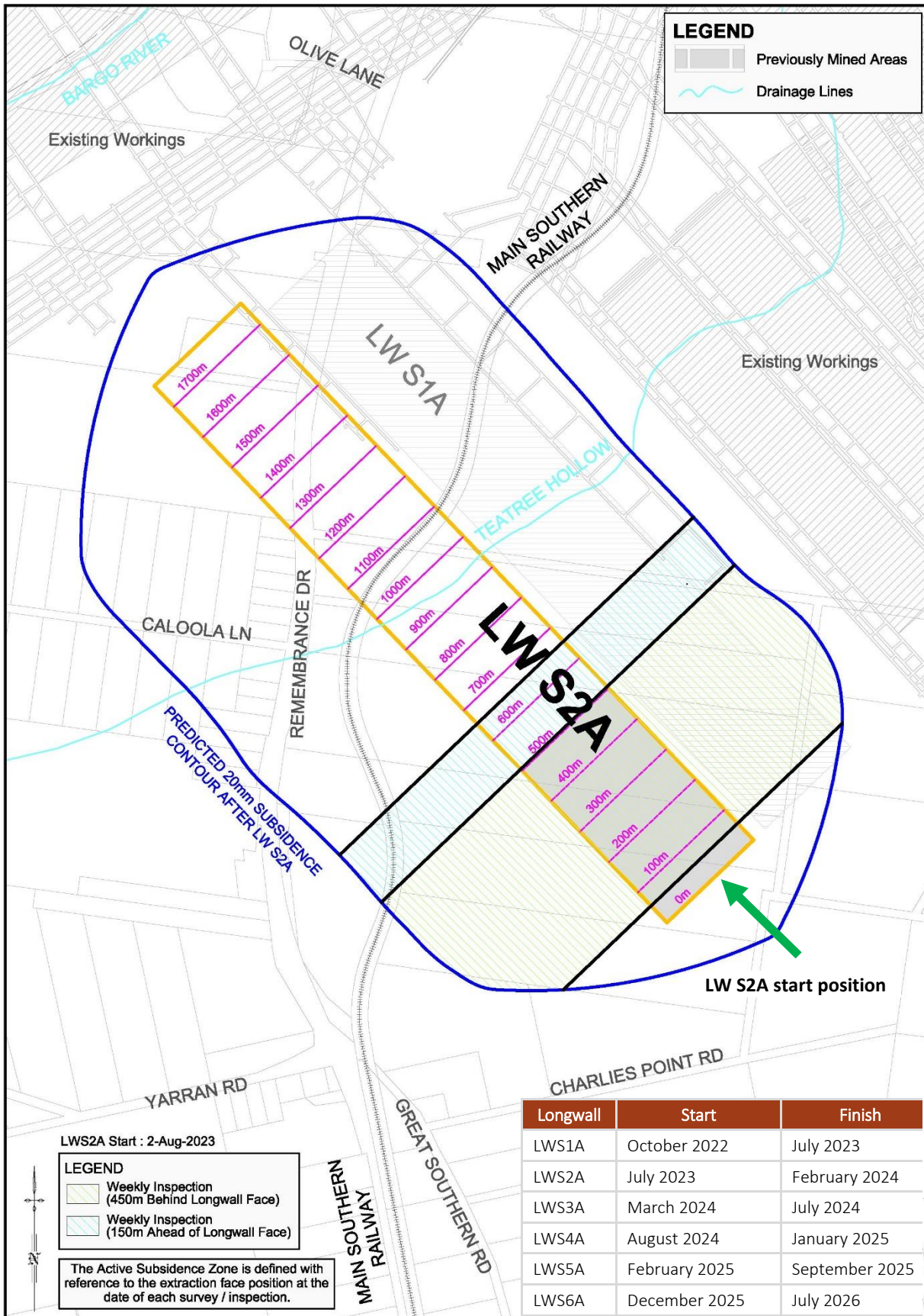


Figure 1 – Longwall South 2A subsidence zone