



TAHMOOR COKING COAL Newsletter

Tahmoor South Domain
July 2025 | Newsletter 4

Mine operations update

Tahmoor Coking Coal is continuing reduced operations due to ongoing financial constraints and funding delays. The workforce remain at home on standby on full pay until operations can resume.

Tahmoor Coking Coal is aiming to commence mining of Longwall S4A in Q4 2025 (however timing is subject to funding and mine site operation restart).

BBQ free to hire in the local community

Do you have an upcoming event and need a mobile BBQ? Tahmoor Coking Coal has a community BBQ trailer available for anyone in the local community to use for free!

The BBQ trailer is kindly managed by Bargo Mens Shed. If you wish to book the BBQ trailer for any upcoming parties, sports carnivals, fundraisers, etc. please contact **Richard Millet at Bargo Mens Shed on 0419 416 586**.



New pre-mining inspection & claims process

The amended Coal Mine Subsidence Compensation legislation came into effect on 1 July 2025, which is administered by government agency Subsidence Advisory NSW.

Pre-mining inspections (PMIs) are now mandatory in certain areas of NSW where underground coal mining is expected to occur. This ensures owners receive adequate compensation if their property is impacted by coal mine subsidence.

Subsidence Advisory NSW will be in contact with you directly if you are required to have a PMI conducted at your property.

Tahmoor Coking Coal will continue to offer home owners free subsidence survey marker installation around dwellings and pools to measure subsidence. We will also continue to offer free property hazard inspections to check for any safety issues that may require mitigation before your property is mined beneath.

Representatives from Subsidence Advisory NSW attend the Wollondilly Service Hub held on the third Wednesday of every month from **10am to 1pm at Tahmoor Community Centre**. The next session is Wednesday 20th August. These sessions provide an opportunity for residents to engage with the Subsidence Advisory team directly to ask questions and access tailored advice relating to mine subsidence claims and processes.

For more info about the new PMI and claims process, visit www.nsw.gov.au/departments-and-agencies/subsidence-advisory or call (02) 4908 4300.

Contact us

Reception: (02) 4640 0100

24hrs hotline: 1800 154 415

Email: tahmoorenquiries@simecgg.com

Web: www.tahmoorcolliery.com.au

Tahmoor Coking Coal - current mine plan

Figure 1 highlights the location of Longwall S4A in yellow.

- The blue line (predicted 20mm Subsidence Area) indicates the area predicted to experience subsidence from LW S4A mining.
- The grey shading depicts the previously mined areas.

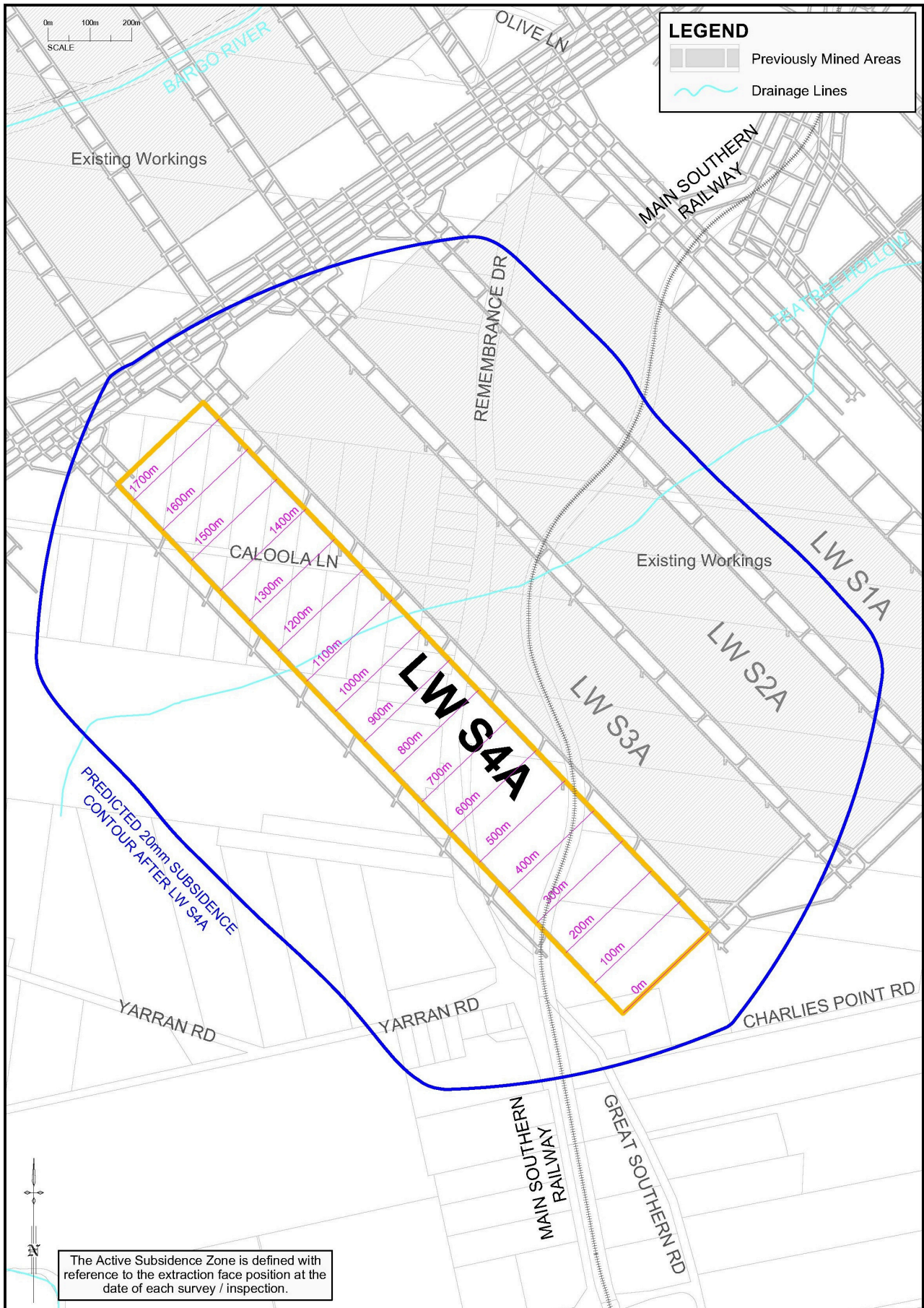


Figure 1 - Longwall South 4A subsidence zone

**KEEP THE KIDS BUSY WHILST
YOU SEE SERVICES WITH A
FREE KIDS CRAFT ACTIVITY
+ FREE BBQ BY VINNIES**



SERVICE HUB

Services Hub

An exciting exciting new service to our local community where you can access a range of services and access help with whatever it may be you need, resources, support and more. No bookings are required, services available to provide assistance on the day.

You Can Access:

- NSW Fair Trading
- SSI (NDIS)
- Revenue NSW
- Argyle Housing
- Services Australia Centrelink (advice/information)
- Service NSW (advice/information)
- APM Employment Agency
- NSW Ombudsman
- Disability Gateway
- Macarthur Women's Domestic Court Advocacy Service
- Gamble Aware
- People with Disability Australia
- Services Our Way
- Safe Wayz
- EACH
- Subsidence Advisory NSW
- BDM
- Benevolent
- NSW Registry of Births, Deaths & Marriages
- Parent Pathways



Every third Wednesday of every month
10am-1pm Tahmoor Community Centre, 6 Harper Close Tahmoor.

15th January
19th February
19th March
16th April
21st May
18th June

16th July
20th August
17th September
15th October
19th November
17th December