

FWP0001602

TAHMOOR COLLIERY FORWARD PROGRAM

Wednesday 1 January 2025 to Friday 31 December 2027



Summary

DETAIL	
Mine	Tahmoor Colliery
Reference	FWP0001602
Forward program commencement date	Wednesday 1 January 2025
Forward program end date	Friday 31 December 2027
Forward program revision (if applicable)	
Contact	Zina Ainsworth
Mining leases	ML 1539 (1992), CCL 747 (1973), ML 1308 (1992), ML 1642 (1992), ML 1376 (1992), CCL 716 (1973)
Project location	Tahmoor Coal Pty Ltd
Date of submission	Friday 28 March 2025

Important

The department may make the information in your program and any supporting information available for inspection by members of the public, including by publication on its website or by displaying the information at any of its offices. If you consider any part of your program to be confidential, please communicate this to the department via the message function on this submission within the NSW Resources Regulator Portal.

Three-year forecast – surface disturbance activities

Project description

Tahmoor Coal Pty Ltd (Tahmoor Coal) owns and operates Tahmoor Mine, an underground coal mine extracting coking coal which is an ingredient in the production of steel manufacturing. An Environmental Impact Statement (EIS) was exhibited in early 2019 seeking approval for the extraction of up to 48 million tonnes (Mt) of ROM coal over a 13-year mine life. Tahmoor Coal subsequently revised the proposed mine design and submitted amended development applications on two occasions (in February and August 2020). In April 2021, Tahmoor Coal received Development Consent SSD 8445 (the Consent) for the Tahmoor South Project, which involves use of the existing surface infrastructure and the extension of underground longwall mining to the south of existing workings. The Project has consent to extract up to 4 Mtpa of ROM coal, with a total of up to 33 Mt of ROM coal extracted over a 10-year period until 31 December 2033.

Description of surface disturbance activities

Exploration activities

Tahmoor Coal will continue to undertake exploration activities within the mining leases, assessment leases and exploration licences to increase the accuracy of the site geological model. Works will include continued structural, coal quality and crop line drilling. Tahmoor Coal was granted approval on 31 May 2024 to carry out the activity “Tahmoor South-West Exploration Program 2024”. The exploration program involves drilling and geotechnical assessment of up to nine (9) exploration boreholes. The program commenced in July 2024 with the drilling and investigation of two (2) boreholes. The exploration program was put on hold in October 2024 and is expected to re-commence in FY2025. Reporting for these drilling programs will be conducted as per mining lease requirements. Additional drill holes to install groundwater monitoring bores may also be required. Where required, monitoring bores will be licenced under the Water Management Act 2000 or the Water Act 1912, depending on the aquifers being intersected and monitored. Geotechnical and test pits will be undertaken as required.

Construction activities

No further construction activities are currently proposed to be undertaken.

Mining schedule

Mining development method and sequencing and general mine features.

Tahmoor Mine is currently longwall mining in the Tahmoor South Domain, located south-west of pit-top operations. Longwall mining of LW S1A commenced in October 2022, with LW S6A scheduled for completion in March 2027. It is estimated that each longwall will be extracted in approximately 6 to 8 months. The rate of longwall retreat is anticipated to range from 50-80 m per week, depending on geological conditions and support regime. Tahmoor Coal operates seven days a week, 24 hours a day on a roster basis.

Areas identified for emplacements, the sequencing of emplacements, construction, and management.

Reject emplacements will be confined to the Reject Emplacement Area (REA) and progressively rehabilitated in accordance with the Forward program - Year 1, Year 2 and Year 3 spacial data and maps. Current emplacement is occurring in sections located in the south-east and centre of the REA with continued progressive filling to achieve the final landform in accordance with the EIS for the Tahmoor South SSD 8445 Consent. Future emplacement is proposed to complete the centre and progressively move towards the south of the REA.

Processing infrastructure activities and the location of tailings facilities and schedule for emplacement.

Tahmoor Coal processes Run of Mine (ROM) Coal at an on-site Coal Handling and Preparation Plant (CHPP). The CHPP utilises crushing and screening, primary and secondary cyclones, and a flotation circuit to produce coking and thermal coal product which is stockpiled, before being loaded and transported by rail to Port Kembla Coal Terminal. Fine reject from the coal washing process is dried using a belt press filter and mixed with coarse reject before being conveyed to the on-site Refuse Emplacement Area (REA). Refuse is emplaced using haul trucks and reshaped by dozers, before being capped with topsoil and progressively rehabilitated. All coal and reject handling are by a fully enclosed conveyor system, with the exception of the tripper conveyor to the primary product stockpile. All operations described in this section are expected to remain for the Life of Mine.

Waste disposal and materials handling operations.

Waste is managed across Tahmoor Coal leases in accordance with the sites Waste Management Plan (WMP) and in compliance with the Waste Classification Guidelines Part 1: Classifying Waste (EPA 2014). Tahmoor Coal has engaged a licensed contractor to act as the authorized agent to manage and track the transport of waste from Tahmoor Mine. Various bins are placed across the site to assist with waste segregation. Waste produced on site is placed in the appropriate bin and if no bin fits the description of that waste, it is placed in a bunded area and covered in case of rainfall. A member of the Environment and Community Department is then provided with details of the waste material so they can forward it to the sites licensed waste contractor for correct off-site disposal. All wastes that have the potential to cause environmental harm (e.g. hazardous waste) are placed in secure areas on site.

Adequate containment (bunding) is provided to minimise the potential for spillage or leaching which could affect surface water quality or cause soil contamination. Bunded areas are constructed and operated generally in accordance with the EPA’s Technical Guideline “Bunding and Spill Management” and Australian Standard (1940- 2004) “The Storage and Handling of Flammable and Combustible Liquids”. Particular waste streams, such as waste oil, are also managed to provide that they are safe from likely ignition sources to minimise the risk of fire.

Key production milestones

MATERIAL	UNIT	YEAR 1	YEAR 2	YEAR 3
Stripped topsoil (if applicable)	(m ³)	0	0	15,300
Rock/overburden	(m ³)	0	0	0
Ore	(Mt)	2,550,000	3,599,027	2,816,773
Reject material¹	(Mt)	1,235,854	1,413,767	818,793
Product	(Mt)	1,341,389	2,224,593	2,028,764

¹ This includes coarse rejects, tailings and any other wastes resulting from beneficiation.

Three-year rehabilitation forecast

Rehabilitation planning schedule

Rehabilitation planning schedule

Limited opportunities for rehabilitation are available during the Tahmoor Mine operational period due to the minimal surface disturbance required to support underground mining operations. Almost all current disturbance areas within the Tahmoor Mine lease are envisaged to be required for the duration of the life of mine and will therefore be rehabilitated at mine closure. Rehabilitation over the next three years will be limited to the REA and post rehabilitation monitoring and reporting for Redbank and Myrtle Creek Corrective Management Action Plan. Further information can be found within the Rehabilitation Management Plan, Rehabilitation Strategy and CMAP (Corrective Management Action Plan) for Redbank and Myrtle Creek. Areas at the REA will be progressively capped and rehabilitated as they reach their final landform design, as soon as is reasonably practical.

Stakeholder consultation

REA rehabilitation stakeholder consultation and creek remediation stakeholder consultation will be undertaken where required.

Rehabilitation studies, risk assessments and/or design work

Annual Rehabilitation monitoring with continue to be conducted to assess the Rehabilitation progression against completion criteria. Redbank Creek and Myrtle Creek monitoring and reporting to be conducted for at least 24 months post completion of the remediation works. Redbank creek CMAP and Myrtle Creek CMAP progress reports to be submitted half yearly for a period of 24 months. No additional works have been scheduled.

Rehabilitation research and trials

RRT NUMBER	PROJECT/TRIAL NAME	OBJECTIVE OF TRIAL/PROJECT	METHODOLOGY	EXPECTED DATE OF COMPLETION	STATUS
RRT0001051	Creek Remediation	The remediation works have been carried at impacted sites in Myrtle Creek and Redbank Creek with the aim to restore post-mining hydrological, ecological and aesthetic characteristics.	Involves the construction of a grout curtain wall at a depth where the fracture network has been detected. Boreholes are drilled across the creek bed, polyurethane grout (PUR) is then injected into the boreholes to create an impermeable layer providing a barrier for subsurface stream flow, with the objective to reduce subsurface flow pathways promoting surface flow and pool holding capacity.	31 Dec 2024	Complete
RRT0001052	Grass Trials	The findings will be used to develop and refine seed mixes and completion criteria as an ongoing process.	Grass planting trials where the survival and growth of planted grass species in areas where the existing vegetation (within revegetation areas) was sparse will continue to be assessed as part of the annual rehabilitation monitoring program.	31 Dec 2033	Ongoing

Rehabilitation maintenance and corrective actions

The rehabilitation monitoring program as outlined in Section 8 of the Rehabilitation Management Plan (RMP) will be used to identify any maintenance actions required and whether further works are required to achieve specific closure criteria. Continued weed management is required throughout the rehabilitation areas of the REA to achieve completion criteria. Additional canopy trees and grass species are required to be underplanted in some stages undergoing establishment to achieve the required completion criteria, with Stage 5 being the first stage selected for these works during 2024.

Rehabilitation schedule

Due to the limited surface disturbance required for operations within the Tahmoor Mine lease area, minimal opportunities for progressive rehabilitation exist. Where opportunities for progressive rehabilitation are identified, works will commence as soon as reasonably practicable. However, works relating to rehabilitation will largely be limited to the REA during the operational phase of the mine. Stages progressively reach their final landform design and are rehabilitated soon after. During the next 3 years, stages will be progressing towards their final landform, two (2) stages are proposed to be completed within this timeframe and have been selected to undergo rehabilitation works once final landform is achieved.

Completion of rehabilitation

No stages selected to be completed during this Forward Program.

Subsidence remediation for underground operations

Subsidence monitoring is undertaken in accordance with the Subsidence monitoring program for Tahmoor South Extraction Plan S1A-S6A. Subsidence impacts are managed in accordance with the relevant Trigger Action Response Plans (TARPs) prepared for the approved Extraction Plans. Any subsidence impacts which require appropriate remediation will be undertaken in accordance with the relevant Extraction Plan TARP.

Progressive mining and rehabilitation statistics

Three-yearly forecast cumulative disturbance and rehabilitation progression

	FORECAST	UNIT	YEAR 1	YEAR 2	YEAR 3
A1	Total disturbance footprint - surface disturbance	(ha)	151.13	151.13	156.27
B	Total active disturbance	(ha)	151.13	148.66	152.09
P	Total new area of land proposed for active rehabilitation	(ha)	0	2.47	4.18

Rehabilitation key performance indicators (KPIs)

	FORECAST	UNIT	YEAR 1	YEAR 2	YEAR 3
O	Total new disturbance area during reporting period	(ha)			5.14
P	Total new area of land proposed for rehabilitation during the reporting period	(ha)		2.47	1.71
Q	Annual rehabilitation to disturbance ratio				0.33

Attachment 1 – Reporting Definitions

REPORTING CATEGORY	DEFINITION
A Total disturbance footprint – surface disturbance	<p>All areas within a mining lease that either have at some point in time or continue to pose a rehabilitation liability due to surface disturbance activities.</p> <p>The total disturbance footprint is the sum of the total active disturbance, decommissioning, landform establishment, growth medium development, ecosystem and land use establishment, ecosystem and land use development and rehabilitation completion (see definitions below).</p> <p>Underground mining operations should not include the footprint of underground mining areas/subsidence management areas in the total disturbance footprint.</p>
B Total active disturbance	<p>Includes on-lease exploration areas, stripped areas ahead of mining, infrastructure areas, water management infrastructure, sewage treatment facilities, topsoil stockpile areas, access tracks and haul roads, active mining areas, waste rock emplacements (active/unshaped/in or out-of-pit), tailings dams (active/unshaped/uncapped) and temporary stabilised areas (e.g. areas sown with temporary cover crops for dust mitigation and temporary rehabilitation).</p>
C Rehabilitation – land preparation	<p>Includes the sum of all disturbed land within a mining lease that have commenced any, or all, of the following phases of rehabilitation – decommissioning, landform establishment and growth medium development.</p> <p>Refer to the glossary of terms in this document for the definition of these phases of rehabilitation.</p>
D Ecosystem and land use establishment	<p>Includes the area which has been seeded/planted with the target vegetation species for the intended final land use. However, vegetation has not matured to a stage where it can be demonstrated that it will be sustainable for the long term and or require only a maintenance regime consistent with target reference/analogous sites.</p> <p>Typically, rehabilitation areas would be in this phase for at least two years (and usually more) before rehabilitation can be classified as being in the ecosystem and land use development phase. This phase does not apply to infrastructure areas that are being retained as part of final land use for the site.</p>

REPORTING CATEGORY		DEFINITION
O		The area of any new active disturbance that will be created during the next three years, as defined under definition A1 (definition A1 Table 5).
P		The sum of any new rehabilitation to be commenced in the next three years. These areas may be in the phases “Rehabilitation - Land Preparation” or the “Ecosystem & Land Use Establishment” (definitions C & D in Table 5).
Q		The rehabilitation to disturbance ratio (S / R) indicates how many hectares of new rehabilitation are undertaken for each hectare of land disturbed during the three years. A ratio of 1/1 indicates that the area of new rehabilitation and disturbance in that period are the same.

Attachment 2 – Definitions

WORD	DEFINITION
Active	In the context of rehabilitation, land associated with mining domains is considered 'active' for the period following disturbance until the commencement of rehabilitation.
Active mining phase of rehabilitation	In the context of rehabilitation, the active mining phase of rehabilitation constitutes the rehabilitation activities undertaken during mining operations such as salvaging and managing soil resources, salvaging habitat resources, and native seed collection. This phase also includes management actions taken during operations to manage risks to rehabilitation and enhance rehabilitation outcomes such as selective handling of waste rock and management of tailings emplacements.
Analogue site	In the context of rehabilitation, an analogue site is a 'reference site' that represents an example of the defining characteristics (such as vegetation composition and structure or agricultural productivity) of the final land use. Characteristics of analogue sites can be assessed to develop the rehabilitation objectives and completion criteria for final land use domains.
Annual rehabilitation report and forward program	As described in the Mining Regulation 2016.
Annual reporting period	As defined in the Mining Regulation 2016.
Closure	A whole-of-mine-life process, which typically culminates in the relinquishment of the mining lease. It includes decommissioning and rehabilitation to achieve the approved final land use(s).
Decommissioning	The process of removing mining infrastructure and removing contaminants and hazardous materials.
Decommissioning Phase of Rehabilitation	Activities associated with the removal of mining infrastructure and removal and/or remediation of contaminants and hazardous materials. In the context of the rehabilitation management plan this phase of rehabilitation may also include studies and assessments associated with decommissioning and demolition of infrastructure or works carried out to make safe or 'fit for purpose' built infrastructure to be retained for future use(s) following lease relinquishment.

WORD	DEFINITION
Department	The Department of Regional NSW.
Disturbance	See Surface Disturbance.
Disturbance area	<p>An area that has been disturbed and that requires rehabilitation.</p> <p>This may include areas such as on-licence exploration areas, stripped areas ahead of mining, infrastructure areas, water management infrastructure, sewage treatment facilities, topsoil stockpile areas, access tracks and haul roads, active mining areas, waste emplacements (active/unshaped/in or out-of-pit), tailings dams (active/unshaped/uncapped), and areas requiring rehabilitation that are temporarily stabilised (i.e. managed to minimise dust generation and/or erosion).</p>
Domain	<p>An area (or areas) of the land that has been disturbed by mining and has a specific operational use (mining domain) or specific final land use (final land use domain). Land within a domain typically has similar geochemical and/or geophysical characteristics and therefore requires specific rehabilitation activities to achieve the associated final land use.</p>
Ecosystem and Land Use Development	<p>This phase of rehabilitation consists of the activities to manage maturing rehabilitation areas on a trajectory to achieving the approved rehabilitation objectives and completion criteria.</p> <p>For vegetated land uses this phase may include processes to develop characteristics of functional self-sustaining ecosystems, such as nutrient recycling, vegetation flowering and reproduction, and increasing habitat complexity, and development of a productive, self-sustaining soil profile.</p> <p>This phase of rehabilitation may include specific vegetation management strategies and maintenance such as tree thinning, supplementary plantings and weed management.</p>
Ecosystem and Land Use Establishment	<p>This phase of rehabilitation consists of the processes to establish the approved final land use following construction of the final landform.</p> <p>For vegetated land uses this rehabilitation phase includes establishing the desired vegetation community and implementing land management activities such as weed control. This phase of rehabilitation may also include habitat augmentation such as installation of nest boxes.</p>
Exploration	Has the same meaning as that term under the State Environmental Planning Policy (Mining, Petroleum Production and Extractive Industries) 2007.

WORD	DEFINITION
Final landform and rehabilitation plan	As defined in the Mining Regulation 2016.
Final land use	As defined in the Mining Regulation 2016.
Form and way	Means the form and way approved by the Secretary. Approved form and way documents are available on the Department's website.
Growth Medium Development	<p>This phase of rehabilitation consists of activities required to establish the physical, chemical and biological components of the substrate required to establish the desired vegetation community (including short lived pioneer species).</p> <p>This phase may include spreading the prepared landform with topsoil and/or subsoil and/or soil substitutes, applying soil ameliorants to enhance the physical, chemical and biological characteristics of the growth media, and actions to minimise loss of growth media due to erosion.</p>
Habitat	Has the same meaning as that term under the <i>Biodiversity Conservation Act 2016</i> and the <i>Fisheries Management Act 1994</i> (as relevant).
Indicator	An attribute of the biophysical environment (e.g. pH, topsoil depth, biomass) that can be used to approximate the progression of a biophysical process. It can be measured and audited to demonstrate (and track) the progress of an aspect of rehabilitation towards a desired completion criterion (i.e. defined end point). It may be aligned to an established protocol and used to evaluate changes in a system.
Land	As defined in the <i>Mining Act 1992</i> .
Landform Establishment	<p>This phase of rehabilitation consists of the processes and activities required to construct the final landform.</p> <p>In addition to profiling the surface of rehabilitation areas to the approved final landform profile this phase may include works to construct surface water drainage features, encapsulate problematic materials such as tailings, and prepare a substrate with the desired physical and chemical characteristics (e.g. rock raking or ameliorating sodic materials).</p>
Large mine	As defined in the Mining Regulation 2016.
Lease holder	The holder of a mining lease.

WORD	DEFINITION
Life of mine	The timeframe of how long a mine is approved to mine, from commencement to closure.
Mine rehabilitation portal	<p>Means the NSW Resources Regulator's online portal that lease holders must use (via a registered account) to:</p> <ul style="list-style-type: none"> ■ upload rehabilitation geographical information system (GIS) spatial data ■ develop rehabilitation GIS spatial data (using online tracing functions) ■ generate rehabilitation plans and rehabilitation statistics using the map viewer and Rehabilitation Key Performance Indicator functionalities. <p>Data submitted to the mine rehabilitation portal is collated in a centralised geodatabase for use by the NSW Resources Regulator to regulate rehabilitation performance of lease holders.</p>
Mining area	As defined in the <i>Mining Act 1992</i> .
Mining domain	A land management unit with a discrete operational function (e.g. overburden emplacement), and therefore similar geophysical characteristics, that will require specific rehabilitation treatments to achieve the final land use(s).
Mining land	As defined in the <i>Mining Act 1992</i> .
Native vegetation	Has the same meaning as that term under section 60B of the <i>Local Land Services Act 2013</i> .
Overburden	Material overlying coal or a mineral deposit.
Performance indicator	An attribute of the biophysical environment (for example pH, slope, topsoil depth, biomass) that can be used to demonstrate achievement of a rehabilitation objective. It can be measured and audited to demonstrate (and track) the progress of an aspect of rehabilitation towards a desired completion criterion, that is, a defined end point. It may be aligned to an established protocol and used to evaluate changes in a system.

WORD	DEFINITION
Phases of rehabilitation	<p>The stages and sequences of actions required to rehabilitate disturbed land to achieve the final land use. The phases of rehabilitation are:</p> <ul style="list-style-type: none"> ■ active mining ■ decommissioning ■ landform Establishment ■ growth medium development ■ ecosystem and land use establishment ■ ecosystem and land use development.
Progressive rehabilitation	<p>The progress of rehabilitation towards achieving the approved rehabilitation completion criteria. This may be described in terms of domains, phases, performance indicators and rehabilitation completion criteria.</p>
Rehabilitation Completion	<p>The final phase of rehabilitation when a rehabilitation area has achieved the approved rehabilitation objectives and rehabilitation completion criteria for the final land use. Rehabilitation areas may be classified as complete when the NSW Resources Regulator has determined in writing that the relevant rehabilitation obligations have been fulfilled following submission of <i>Form ESF2 Rehabilitation completion and/or review of rehabilitation cost estimate</i> application by the lease holder.</p>
Rehabilitation Completion criteria	<p>As defined in the Mining Regulation 2016.</p>
Rehabilitation cost estimate	<p>As defined in the Mining Regulation 2016.</p>
Rehabilitation management plan	<p>As defined in the Mining Regulation 2016.</p>
Rehabilitation objectives	<p>As defined in the Mining Regulation 2016.</p>
Rehabilitation risk assessment	<p>As defined in the Mining Regulation 2016.</p>
Rehabilitation schedule	<p>The defined timeframes for progressive rehabilitation set out in the forward program.</p>

WORD	DEFINITION
Relevant stakeholders	Means any persons or bodies who may be affected by the mining operations, including rehabilitation, carried out on the lease land, and includes: <ul style="list-style-type: none"> ■ the relevant development consent authority ■ the local council ■ the relevant landholder(s) ■ community consultative committee (if required under the development consent) or equivalent consultative group ■ affected land holder(s) ■ government agencies relevant to the final land use ■ affected infrastructure authorities (electricity, telecommunications, water, pipeline, road, rail authorities) ■ local Aboriginal communities, and ■ any other person or body determined by the Minister to be a relevant stakeholder in relation to a mining lease.
Risk	The effect of uncertainty on objectives. It is measured in terms of consequences and likelihood (AS/NZS ISO 31000:2009).
Secretary	The Secretary of the Department.
Security deposit	An amount that a mining lease holder is required to provide and maintain under a mining lease condition, to secure funding for the fulfilment of obligations under the lease (including obligations that may arise in the future).
Surface disturbance	Includes activities that disturb the surface of the mining area, including mining operations, ancillary mining activities and exploration.
Tailings	A combination of the fine-grained solid material remaining after the recoverable metals and minerals have been extracted from the mined ore, and any process water ² .
Waste	Has the same meaning as that term under the <i>Protection of the Environment Operations Act 1997</i> .

² Commonwealth of Australia (DITR), 2007. *Tailings Management*.

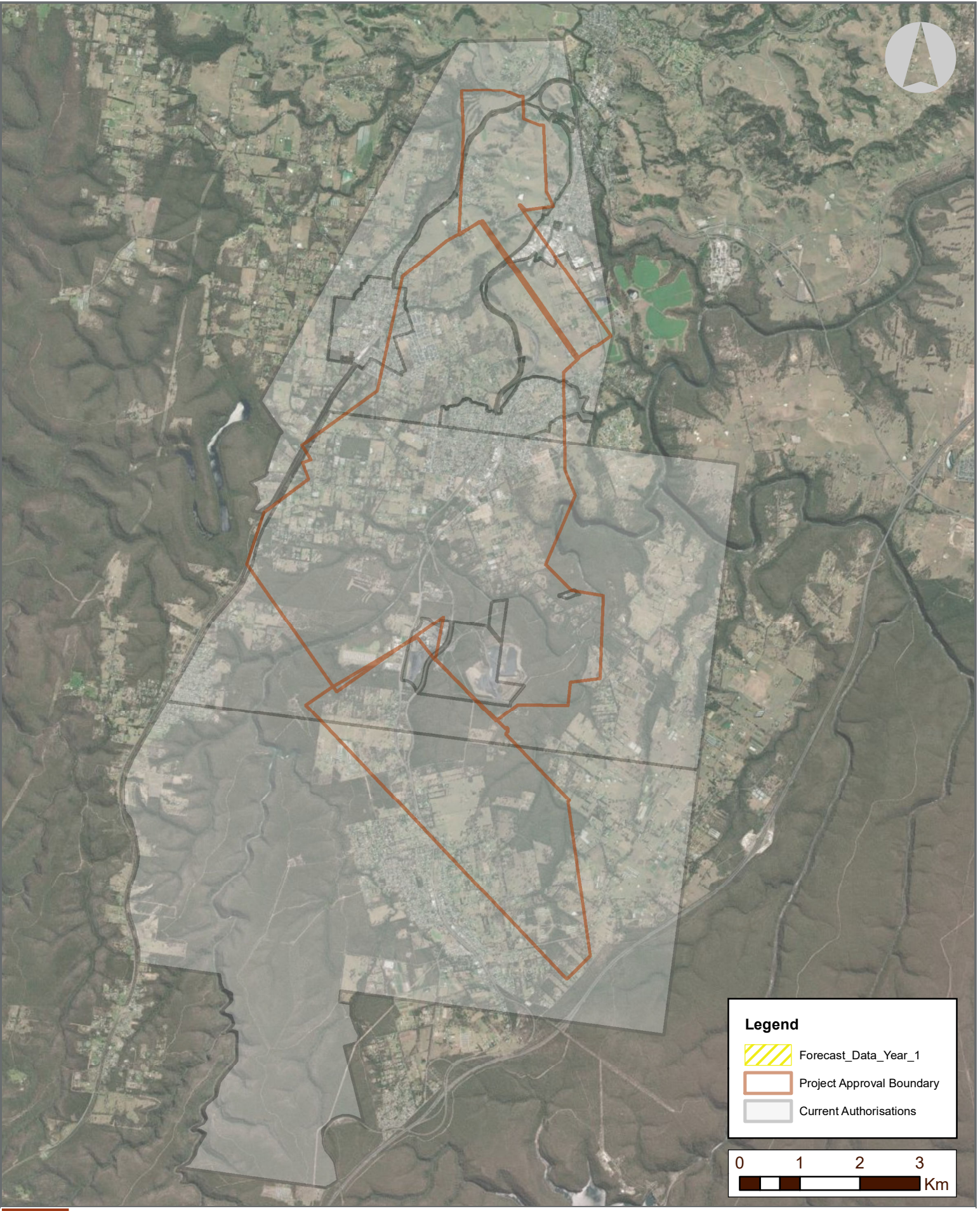
Attachment 3 – Plans

Plan 2A.pdf

Plan 2B.pdf

Plan 2C.pdf

Forward Program (LARGE MINE) v2.5



SIMEC
MEMBER OF






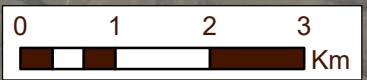
Plan 2A Mining and Rehabilitation - Year 1 Tahmoor Coal

Id: 7575, 5833

Date: 6/03/2025

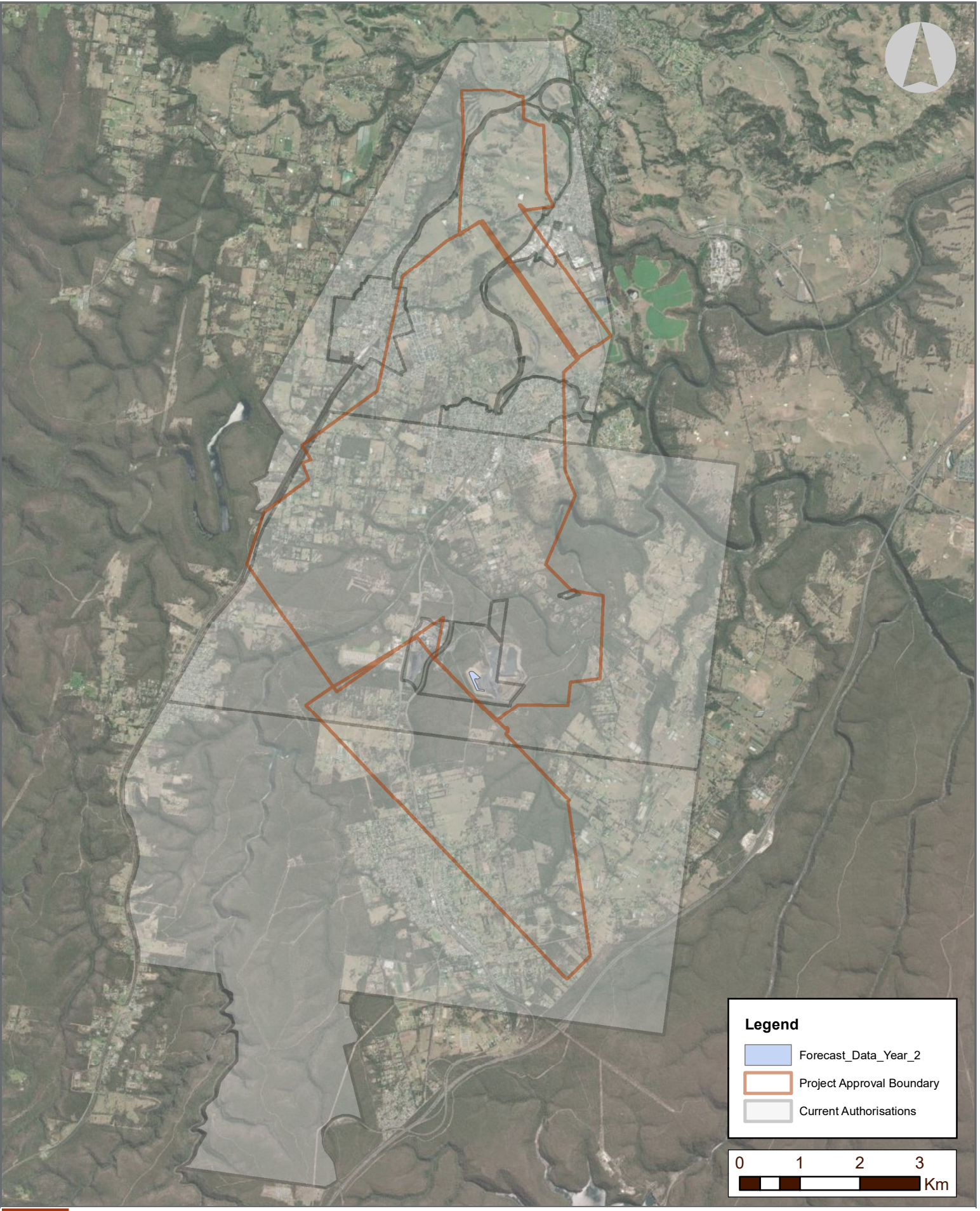
Legend

-  Forecast_Data_Year_1
-  Project Approval Boundary
-  Current Authorisations






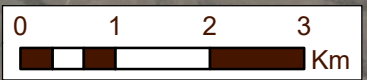
Coordinate System: GDA 1994 MGA Zone 56
Projection: Transverse Mercator
Datum: GDA 1994

Data Sources:
© NSW DFSI (2019)
© NSW Mining (2019)
© SIMEC (2019)



Legend

-  Forecast_Data_Year_2
-  Project Approval Boundary
-  Current Authorisations



MEMBER OF



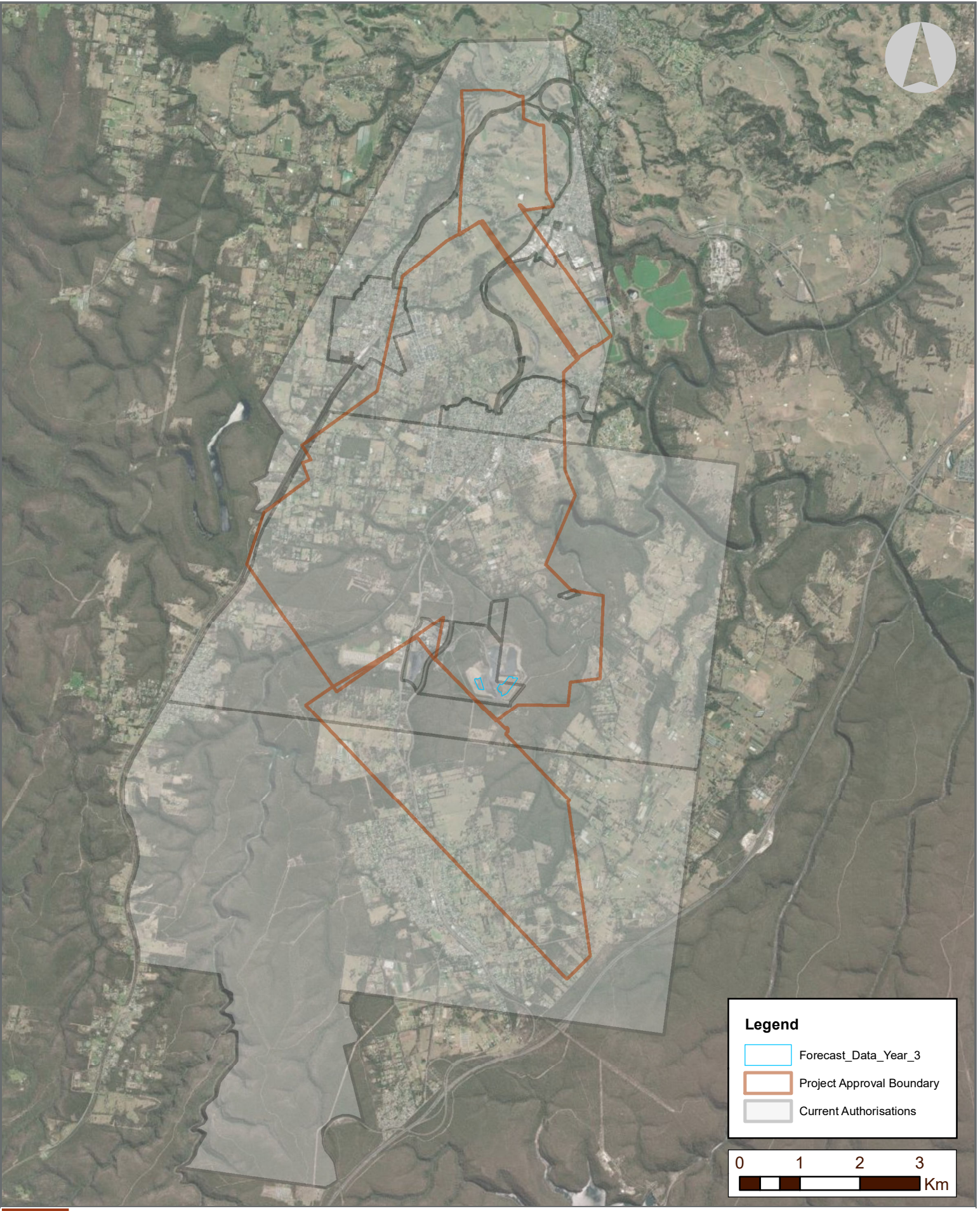
Plan 2B Mining and Rehabilitation - Year 2 Tahmoor Coal

Id: 7625, 5833




Date: 6/03/2025

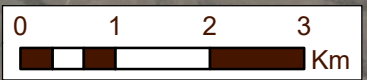
Coordinate System: GDA 1994 MGA Zone 56
Projection: Transverse Mercator
Datum: GDA 1994

Data Sources:
© NSW DFSI (2019)
© NSW Mining (2019)
© SIMEC (2019)



Legend

-  Forecast_Data_Year_3
-  Project Approval Boundary
-  Current Authorisations



SIMEC
MEMBER OF



Plan 3A Mining and Rehabilitation - Year 3 Tahmoor Coal

Id: 7581, 5833

Date: 6/03/2025

Coordinate System: GDA 1994 MGA Zone 56
Projection: Transverse Mercator
Datum: GDA 1994

Data Sources:
© NSW DFSI (2019)
© NSW Mining (2019)
© SIMEC (2019)